



# PARTS CATALOG

Published

2012/1 (Jan.)

---

0CR10-G45201

# PREFACE

1. This Parts Catalog carries all parts incorporated in YANMAR Model 3TNE74-SA, G1A, G2A & 3TNE74C-SA, G1A.

2. Parts catalog history

	Parts catalog No.	Published	Note
1st edition	000Y00R4520	Apr., 1995	Disuse old edition
1st revised	000Y00R4521	Jul., 2002	

3. Model name

Column	Model name	Manufactured	E/#
(A)	3TNE74-SA	1995/4~	13639~
(B)	3TNE74-G1A	1995/9~	16007~
(C)	3TNE74-G2A	1996/2~	18343~
(D)	3TNE74C-SA	1996/1~	00102~
(E)	3TNE74C-G1A	1996/1~	00101~

4. Each illustration corresponds to the parts list on the following page.

5. When ordering parts, clearly write down the engine model and serial number, as well as the name and number of each part in your order sheet. This will help insure reliable delivery of the parts you have ordered.

## Directions for the Parts Catalog.

1. This Parts Catalog shows both standard and optional parts.
2. Parts may change without prior notice.
3. The following is an example of the Parts Catalog format.

REF.	LEV.	PARTS NO.	DESCRIPTION	Q'TY						I	R
				(A)	(B)	(C)	(D)	(E)	(F)		
1	1	729595-51390	FUEL INJECTION PUMP	1	1	1	1	1			1
1-1	1	729595-51391	FUEL INJECTION PUMP	1	1	1	1	1		N	1
		(A=E00185) (B=E00200)									
3	2	26022-060162	SCREW M 6X 16	9	9	9	9	9			
3-1	2	26022-060162	SCREW M 6X 16	4	4	4	4	4		K	
		(A=E00156) (B=E00156) (C=E00156) (D=E00156) (E=E00156)									
4	2	129470-51040	CAMSHAFT	1	1	1	1	1			
5	2	122710-51050	BEARING, ROLLER	2	2	2	2	2			
6	2	129470-51060	RETAINER	1	1	1	1	1			

Remarks
(1) BOOST COMPEMSATOR TYPE. OPTIONAL PART, TO E00155,(4JH-DT, 4JH-DTZ

### ① Ref. No.

The Ref. No. listed may not be in accordance with the illustration Ref. No.

(Ex.) Illustration No.

List Ref No.

1

1

(Before change)

1-1

(After change)

For interchangeable symbols N, R and K, illustrations for new parts may be abbreviated.

### ② Lev. (Level)

Level indication

The numbers below indicate the level of relativity towards the main part.

1 ----- Main parts (Assembly parts)

2 ----- Sub component included in " 1 ".

3 ----- Sub component included in " 2 ".

Note) Parts that are not for sale are partially illustrated but not listed.

### ③ Interchangeability Symbol

When a part change takes place, one of the following interchangeability symbols is indicated beside the part.

Symbol	Interchangeability	Contents note
N	Old $\begin{matrix} \leftarrow \text{Yes} \\ \text{No} \rightarrow \end{matrix}$ New	New Part is interchangeable for Old Part but Old Part is not interchangeable for New Part.
Q	Old $\begin{matrix} \leftarrow \text{No} \\ \text{Yes} \rightarrow \end{matrix}$ New	New Part is not interchangeable for Old Part but Old Part is interchangeable for New Part.
R	Old $\begin{matrix} \leftarrow \text{Yes} \\ \text{Yes} \rightarrow \end{matrix}$ New	New/ Old Parts are both interchangeable.
S	Old $\begin{matrix} \leftarrow \text{No} \\ \text{No} \rightarrow \end{matrix}$ New	New/ Old Parts are both not interchangeable.
W		Part newly added.
Z		Part discontinued.
F		Not interchangeable by a single part but interchangeable together with related parts.
K		Changes only for used parts quantities.

### ④ Effective Machine No.

When a part changes, the effective Machine No. will be indicated in the (A)-(F) column.

Product Symbol	Product No.	Product Symbol	Product No.
C	Clutch No. Compressor No.	F	Machine No. (Agricultural Equip.)
D	Drive No.	M	Machine No.
E	Engine No.		

Note 1) A date may follow the symbol. (Ex.) 1996.01

Note 2) "XXXXX" and "ZZZZZ" are for parts that could not be predicted or for engine models that could not be identified.

Note 3) (A=E00185) is the E (Engine Serial Number) for the column (A) model (in this case 4JH-DT) after the parts design change.

### ⑤ Remarks

Figures or alphabets (symbols) are entered in the remarks column.

The comments (remarks) on parts that are indicated at the bottom of the illustration are the same symbols as those stated above.

# CONTENTS

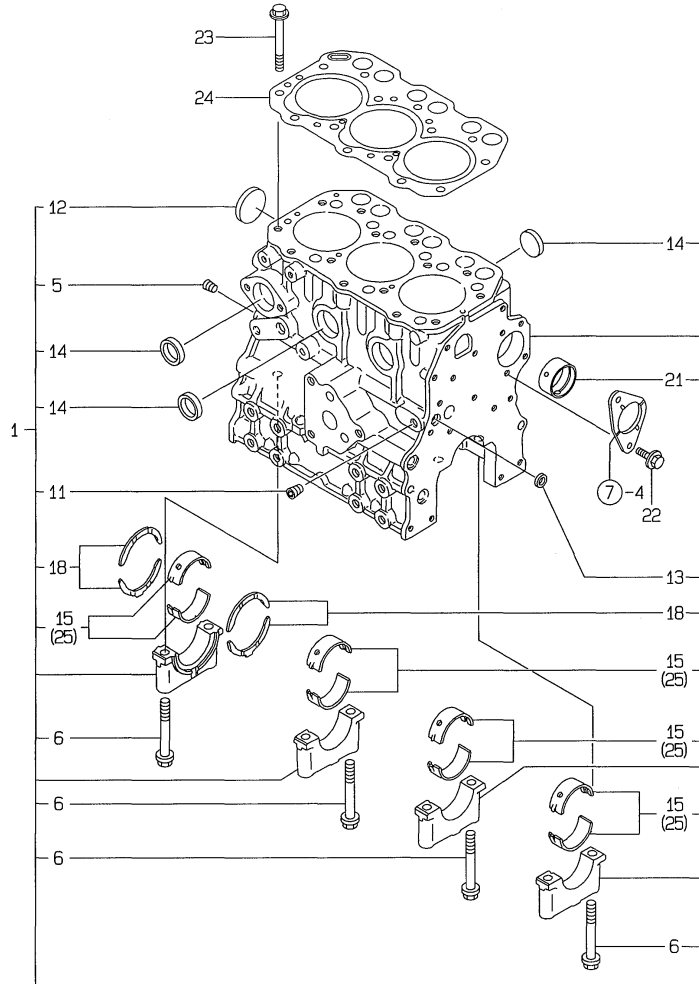
MODEL : 3TNE74(C)-SA,G1A,G2A

PC NO : 0CR10-G45201

Fig.No.	GROUP NAME
3TNE74(C)-SA,G1A,G2A	
1.	CYLINDER BLOCK
2.	GEAR HOUSING
3.	FLYWHEEL HOUSING & OIL SUMP
4.	CYLINDER HEAD & BONNET
5.	SUCTION MANIFOLD & AIR CLEANER
6.	EXHAUST MANIFOLD & SILENCER
7.	CAMSHAFT & DRIVING GEAR
8.	CRANKSHAFT & PISTON
9.	LUB.OIL SYSTEM
10.	COOLING WATER SYSTEM
11.	RADIATOR
12.	FUEL INJECTION PUMP
13.	GOVERNOR
14.	FUEL INJECTION VALVE
15.	FUEL FILTER
16.	ENGINE CONTROL DEVICE
17.	STARTING MOTOR
18.	GENERATOR
19.	PANEL
20.	GASKET SET
21.	STARTING MOTOR(INNER PARTS
22.	STARTING MOTOR(COLD DISTRICT)

Fig.No. GROUP NAME

Fig.1. CYLINDER BLOCK



OCR10-G45201 1. CYLINDER BLOCK

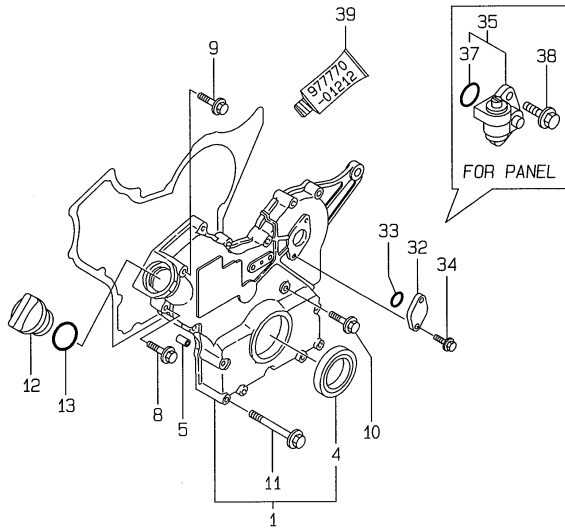
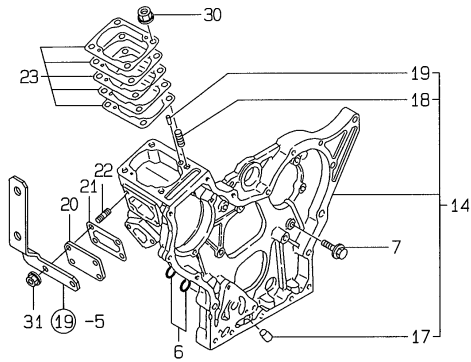
(A)=3TNE74-SA  
(B)=3TNE74-G1A  
(C)=3TNE74-G2A

(D)=3TNE74C-SA  
(E)=3TNE74C-G1A  
(F)=

REF.	LEV.	PARTS NO.	DESCRIPTION	Q'TY						I	R
				(A)	(B)	(C)	(D)	(E)	(F)		
1	1	719623-01560	BLOCK ASSY, CYLINDER	1	1	1	1	1			
5	2	119600-01050	PLUG PT1/4	1	1	1	1	1			
6	2	119620-02020	BOLT	8	8	8	8	8			
11	2	23871-010000	PLUG PT1/8,SCREW	1	1	1	1	1			
I 11-1	2	23876-010000	PLUG PT1/8,SCREW	1	1	1	1	1		N	
		(A=E3333) (B=E3333) (C=E3333) (D=E3333) (E=E3333)									
12	2	27231-450000	PLUG 45	1	1	1	1	1			
I 12-1	2	119623-01250	PLUG 45	1	1	1	1	1		N	
		(A=E3333) (B=E3333) (C=E3333) (D=E3333) (E=E3333)									
13	2	27241-120000	PLUG 12	1	1	1	1	1			
14	2	27241-300000	PLUG 30	6	6	6	6	6			
15	2	719620-02800	MAIN BEARING	4	4	4	4	4			
18	2	719620-02930	BEARING, THRUST	2	2	2	2	2			
21	2	119620-02410	BUSH, CAMSHAFT	1	1	1	1	1			
I 21-1	2	119624-02410	BUSH	1	1	1	1	1		R	
		(A=E32212) (B=E32569) (C=E32211) (D=E00199) (E=E00200)									
22	1	26106-060122	BOLT M 6X 12 PLATED	2	2	2	2	2			
23	1	119620-01200	BOLT, CYLINDER HEAD	14	14	14	14	14			
24	1	119623-01330	GASKET, CYL. HEAD	1	1	1	1	1			
25	1	719620-02870	MAIN BEARING US=0.25	4	4	4	4	4		1	

Remarks  
(1) UNDER-SIZE (U.S.=0.25) PART.

Fig.2. GEAR HOUSING



OCR10-G45201 2. GEAR HOUSING

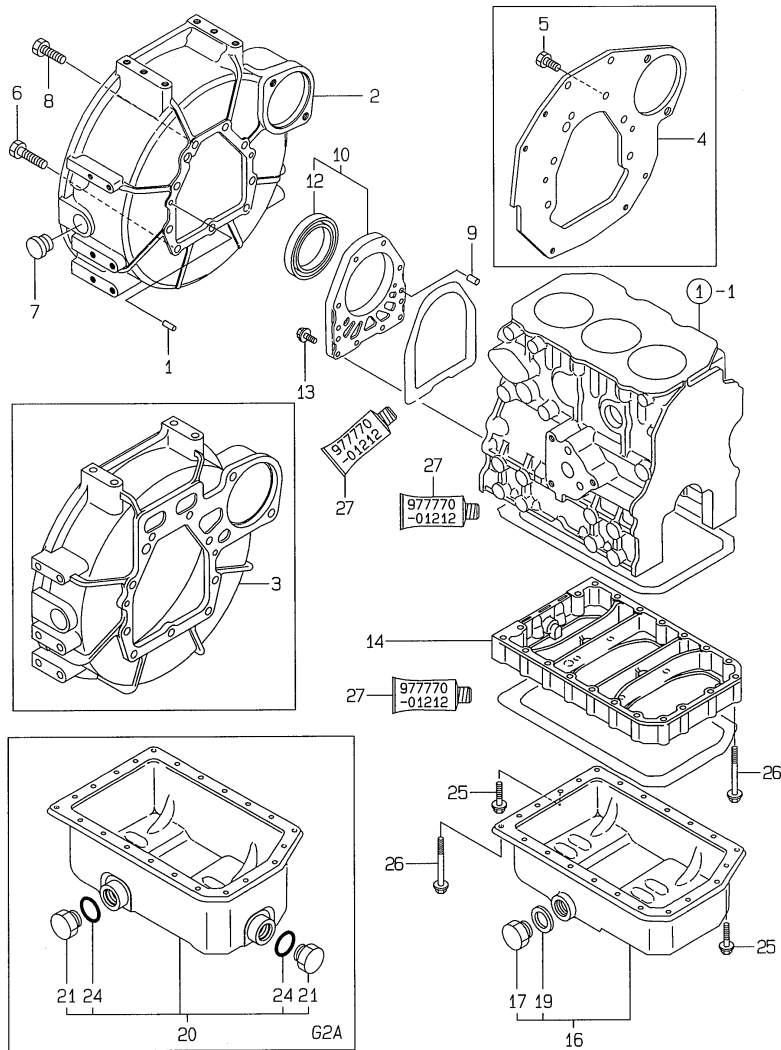
(A)=3TNE74-SA  
(B)=3TNE74-G1A  
(C)=3TNE74-G2A

(D)=3TNE74C-SA  
(E)=3TNE74C-G1A  
(F)=

REF.	LEV.	PARTS NO.	DESCRIPTION	Q'TY						I	R
				(A)	(B)	(C)	(D)	(E)	(F)		
1	1	119610-01590	COVER ASSY, HOUSING	1	1	1	1	1			
4	2	119620-01800	SEAL, OIL	1	1	1	1	1			
5	1	119660-01911	PIPE, KNOCK	4	4	4	4	4			
6	1	24311-000120	O-RING 1A P 12.0	2	2	2	2	2			
I 6-1	1	119624-32040	O-RING P 12.0	2	2	2	2	2		N	
		(A=E61629)	(B=E61596)	(C=E61671)	(D=E00240)	(E=E61811)					
7	1	26106-060162	BOLT M 6X 16 PLATED	7	7	7	7	7			
8	1	26106-060302	BOLT M 6X 30 PLATED	8	8	8	8	8			
9	1	26106-060602	BOLT M 6X 60 PLATED	1	1	1	1	1			
10	1	26106-060602	BOLT M 6X 60 PLATED	3	3	3	3	3			
11	1	26106-060802	BOLT M 6X 80 PLATED	6	6	6	6	6			
12	1	124160-01751	COVER, FILLER	1	1	1	1	1			
13	1	24311-000320	O-RING 1A P-32.0	1	1	1	1	1			
14	1	119610-01490	HOUSING ASSY, GEAR	1	1	1	1	1			
17	2	119660-01510	PLUG 10X14	1	1	1	1	1			
18	2	121450-01560	STUD M 8X 22	4	4	4	4	4			
19	2	22351-040010	SPRING PIN 4X10	2	2	2	2	2			
20	1	119660-01551	COVER	1	1	1	1	1			
21	1	119660-01562	GASKET, COVER	1	1	1	1	1			
22	1	119660-01570	STUD M6X12	4	4	4	4	4			
23	1	119623-01950	SHIM PACK	1	1	1	1	1			
30	1	194990-22050	NUT W/WASHER 8	4	4	4	4	4			
31	1	26366-060002	NUT M 6	4	4	4	4	4			
32	1	121023-01550	COVER, BLIND	1	1	1	1	1			
33	1	24341-000240	O-RING 1A S-24.0	1	1	1	1	1			
34	1	26106-060182	BOLT M 6X 18 PLATED	2	2	2	2	2			
I 34-1	1	26106-060162	BOLT M 6X 16 PLATED	2	2	2	2	2		N	
		(A=E6XXX)	(B=E6XXX)	(C=E6XXX)	(D=E6XXX)	(E=E6XXX)					
35	1	129150-91400	GEAR UNIT, TACHOMETER	1	1	1	1	1		1	
37	2	24341-000240	O-RING 1A S-24.0	1	1	1	1	1		1	
38	1	26106-060162	BOLT M 6X 16 PLATED	2	2	2	2	2		1	
I 39	1	977770-01212	GASKET, LIQUID	1	1	1	1	1		W 2	
		(A=E6XXX)	(B=E6XXX)	(C=E6XXX)	(D=E6XXX)	(E=E6XXX)					

Remarks  
(1) FOR PANEL  
(2) OPTIONAL PART.

Fig.3. FLYWHEEL HOUSING & OIL SUMP



(A)=3TNE74-SA  
(B)=3TNE74-G1A  
(C)=3TNE74-G2A

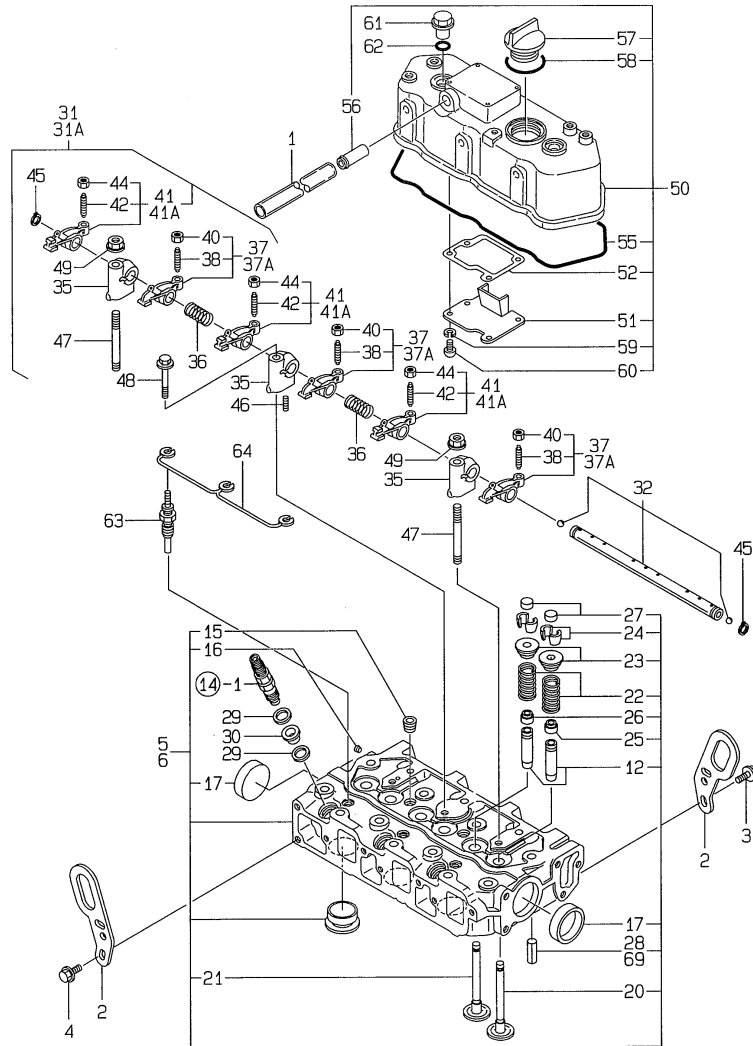
(D)=3TNE74C-SA  
(E)=3TNE74C-G1A  
(F)=

REF.	LEV.	PARTS NO.	DESCRIPTION	QTY						I	R
				(A)	(B)	(C)	(D)	(E)	(F)		
1	1	129100-01580	PARALLEL PIN 8X16	2	2	2	2	2			
2	1	119280-01600	FLANGE, MOUNTING	1	1	1	1	1			
3	1	119600-01600	HOUSING, FLYWHEEL	1		1	1				
4	1	119621-01611	REAR PLATE	1		1	1				
5	1	26116-100202	BOLT M10X 20 PLATED	8		8	8				
6	1	121120-01620	BOLT M 10X 28	3	3	3	3	3			
7	1	119620-01750	CAP, FLYWHEEL COVER	1	1	1	1	1			
8	1	26206-100252	BOLT M10X25	6	6	6	6	6			
9	1	119620-01620	PARALLEL PIN 6X10	2	2	2	2	2			
10	1	119660-01640	CASE ASSY, OIL SEAL	1	1	1	1	1			
12	2	124085-02220	SEAL, OIL	1	1	1	1	1			
13	1	26106-060222	BOLT M 6X 22 PLATED	10	10	10	10	10			
14	1	119600-01722	SPACER, OIL SUMP	1	1	1	1	1			
16	1	719631-01540	SUMP ASSY, LUB. OIL	1	1		1	1			
17	2	119640-01640	DRAIN PLUG M22	1	1		1	1			
19	2	22190-220002	SEAL WASHER 22S	1	1		1	1			
20	1	119600-01770	SUMP ASSY, LUB. OIL					1			
21	2	171301-01640	PLUG M22					2			
I 24	2	24341-000250	O-RING 1A S-25.0				2				
25	1	26106-060122	BOLT M 6X 12 PLATED	3	3	3	3	3			
26	1	26106-060452	BOLT M 6X 45 PLATED	20	20	20	20	20			
I 27	1	977770-01212	GASKET, LIQUID	1	1	1	1	1		W 1	

(A)=EXXX (B)=EXXX (C)=EXXX (D)=EXXX (E)=EXXX

Remarks  
(1) OPTIONAL PART.

Fig.4. CYLINDER HEAD & BONNET



(A)=3TNE74-SA  
(B)=3TNE74-G1A  
(C)=3TNE74-G2A

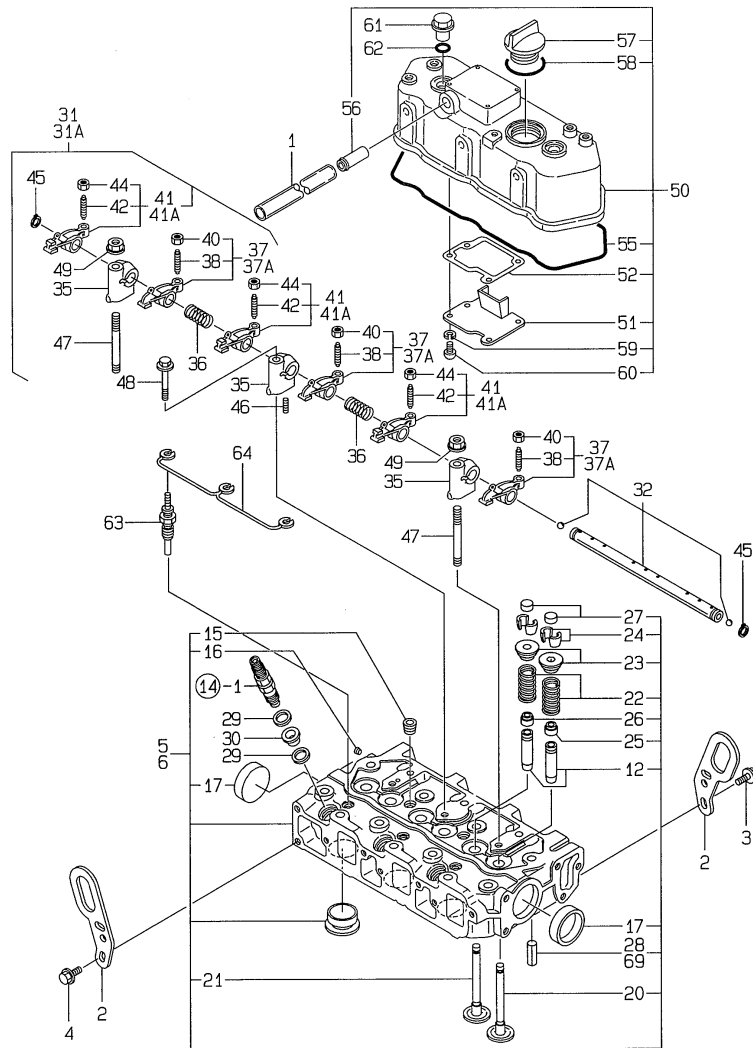
(D)=3TNE74C-SA  
(E)=3TNE74C-G1A  
(F)=

REF.	LEV.	PARTS NO.	DESCRIPTION	QTY						I	R
				(A)	(B)	(C)	(D)	(E)	(F)		
1	1	23065-120500	PIPE, VINYL 12X 500	1	1	1	1	1			
2	1	119260-07900	LIFTER, ENGINE	2	2	2	2	2			
3	1	26106-080142	BOLT 8X 14 PLATED	1	1	1	1	1			
4	1	26106-080142	BOLT 8X 14 PLATED	2	2	2	2	2			
5	1	719623-11710	HEAD ASSY, CYLINDER			1					
6	1	719623-11700	HEAD ASSY, CYLINDER	1	1		1	1			
12	2	119620-11801	GUIDE, VALVE	6	6	6	6	6			1
15	2	121850-11860	PLUG PT1/4	2	2	2	2	2			
15-1	2	23876-020000	PLUG PT1/4,SCREW	2	2	2	2	2			N
		(A=E32212)	(B=E32211)	(C=E32211)	(D=E00199)	(E=E32212)					
16	2	27221-050080	PLUG 5X 8	1	1	1	1	1			
17	2	27241-400000	PLUG 40	2	2	2	2	2			
20	2	119623-11100	VALVE, INTAKE	3	3	3	3	3			
21	2	119620-11110	VALVE, EXHAUST	3	3	3	3	3			
22	2	119620-11120	SPRING, VALVE	6	6	6	6	6			
23	2	119620-11180	RETAINER, SPRING	6	6	6	6	6			
24	2	27310-070001	COTTER, 7	6	6	6	6	6			
25	2	124160-11340	SEAL, VALVE STEM(INT	3	3	3	3	3			
26	2	124950-11340	SEAL, VALVE STEM(EXH	3	3	3	3	3			
27	2	104211-11370	CAP, VALVE	6	6	6	6	6			
28	2	22351-060012	SPRING PIN 6X12	2	2		2	2			
29	1	119600-11460	GASKET, NOZZLE	6	6	6	6	6			
30	1	119600-11450	PROTECTOR, NOZZLE	3	3	3	3	3			
31	1	119620-11200	SUPPORT ASSY, ARM	1		1	1				
31A	1	119789-11200	SUPPORT ASSY, ARM		1			1			
32	2	119620-11240	SHAFT ASSY, ROCKER	1	1	1	1	1			
35	2	119620-11260	SUPPORT, ROCKER ARM	3	3	3	3	3			
36	2	119620-11280	SPRING	2	2	2	2	2			
37	2	719620-11650	ARM ASSY, ROCKER	3		3	3				
37A	2	719789-11650	ARM ASSY, ROCKER		3			3			
38	3	105010-11230	SCREW, VALVE	3	3	3	3	3			
40	3	26756-060002	LOCK NUT 6	3	3	3	3	3			
40-1	3	26856-060002	LOCK NUT 6	3		3	3				N
		(A=E32212)	(B=E32211)	(C=E32211)	(D=E00199)	(E=E32212)					
41	2	719620-11660	ARM ASSY, ROCKER	3		3	3				
41A	2	719789-11660	ARM ASSY, ROCKER		3			3			
42	3	105010-11230	SCREW, VALVE	3	3	3	3	3			
44	3	26756-060002	LOCK NUT 6	3	3	3	3	3			
44-1	3	26856-060002	LOCK NUT 6	3		3	3				N
		(A=E32212)	(B=E32211)	(C=E32211)	(D=E00199)	(E=E32212)					
45	2	22242-000120	CIRCLIP 12	2	2	2	2	2			
46	2	26979-050162	SCREW M 5X16	1	1	1	1	1			
47	1	119620-11350	STUD	2	2	2	2	2			
48	1	26106-080452	BOLT M 8X 45 PLATED	1	1	1	1	1			
49	1	26366-080002	NUT M 8	2	2	2	2	2			
49-1	1	26306-080002	NUT	2	2	2	2	2			N
		(A=E32212)	(B=E32211)	(C=E32211)	(D=E00199)	(E=E32212)					
50	1	119620-11330	BONNET ASSY, HEAD	1		1					
50-1	1	119657-11350	BONNET ASSY	1	1	1	1	1			N
		(A=E15206)	(C=E36145)								
51	2	119620-03020	PLATE, SHELTER	1	1	1	1	1			

Remarks  
(1) REPAIR PART.



Fig.4. CYLINDER HEAD & BONNET



OCR10-G45201 4. CYLINDER HEAD & BONNET

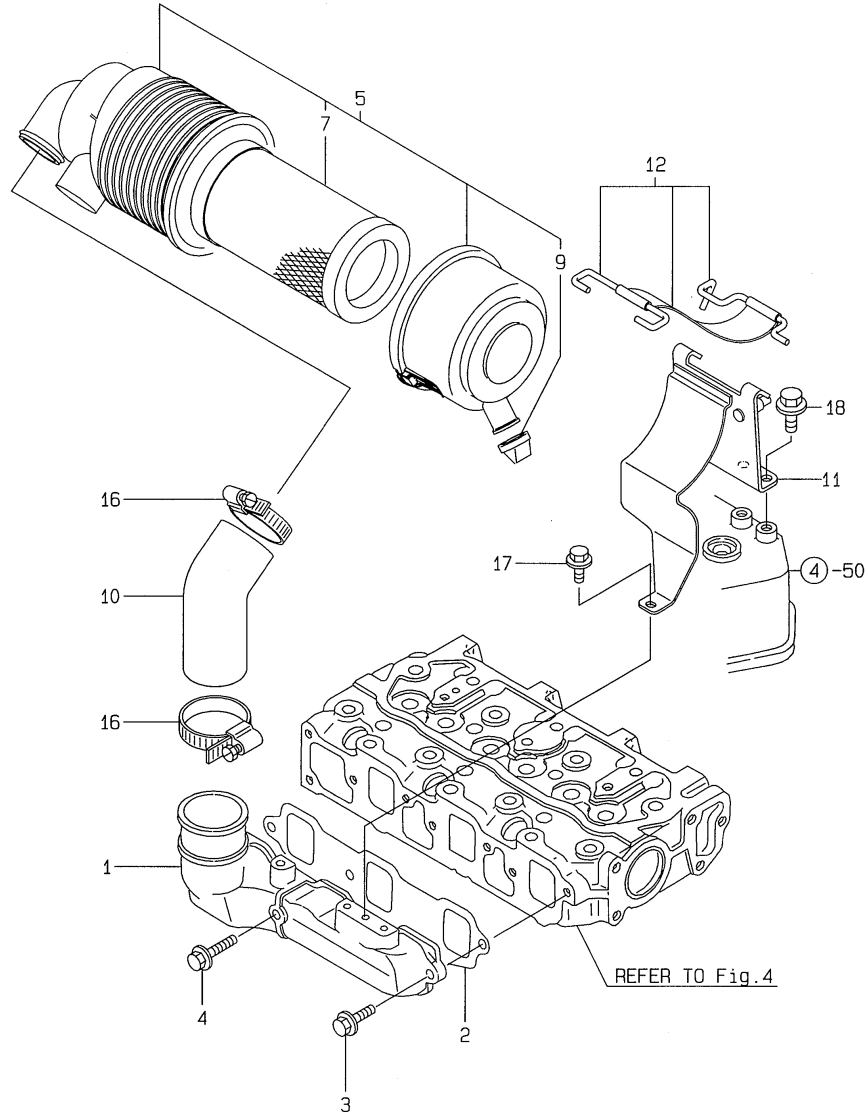
(A)=3TNE74-SA  
(B)=3TNE74-G1A  
(C)=3TNE74-G2A

(D)=3TNE74C-SA  
(E)=3TNE74C-G1A  
(F)=

REF.	LEV.	PARTS NO.	DESCRIPTION	Q'TY						I	R
				(A)	(B)	(C)	(D)	(E)	(F)		
52	2	119620-03031	GASKET, PLATE	1	1	1	1	1			
55	2	119620-11310	GASKET, BONNET	1	1	1	1	1			
56	2	119620-11390	JOINT	1	1	1	1	1			
56-1	2	118400-03060 (A=E36146) (B=E36948) (C=E36145) (D=E00235) (E=E00222)	JOINT, BREATHER	1	1	1	1	1		R	
57	2	124160-01751	COVER, FILLER	1		1					
57-1	2	119807-11770 (A=E15206) (C=E36145)	PLUG, BLIND	1	1	1	1	1		N	
58	2	24311-000320 (A=E15206) (C=E36145)	O-RING 1A P-32.0	1		1				Z	
59	2	22217-050000 (A=E28266) (B=E31094) (C=E28527) (D=E00190) (E=E00183)	SPRING WASHER 5	4	4	4	4	4		Z	
60	2	26557-050102	SCREW M 5X 10	4	4	4	4	4			
60-1	2	22857-500100 (A=E28266) (B=E31094) (C=E28527) (D=E00190) (E=E00183)	SCREW 5X10, TAPPING	4	4	4	4	4		R	
61	1	124160-11360	KNOB	2	2	2	2	2			
62	1	24311-000120	O-RING 1A P 12.0	2	2	2	2	2			
63	1	129795-77800	PLUG, GLOW	3	3	3	3	3			
64	1	119620-77820	CONNECTOR, GLOW PLUG	1	1	1	1	1			
69	1	22351-060012	SPRING PIN 6X12			2					

Remarks  
(1) REPAIR PART.

Fig.5. SUCTION MANIFOLD & AIR CLEANER



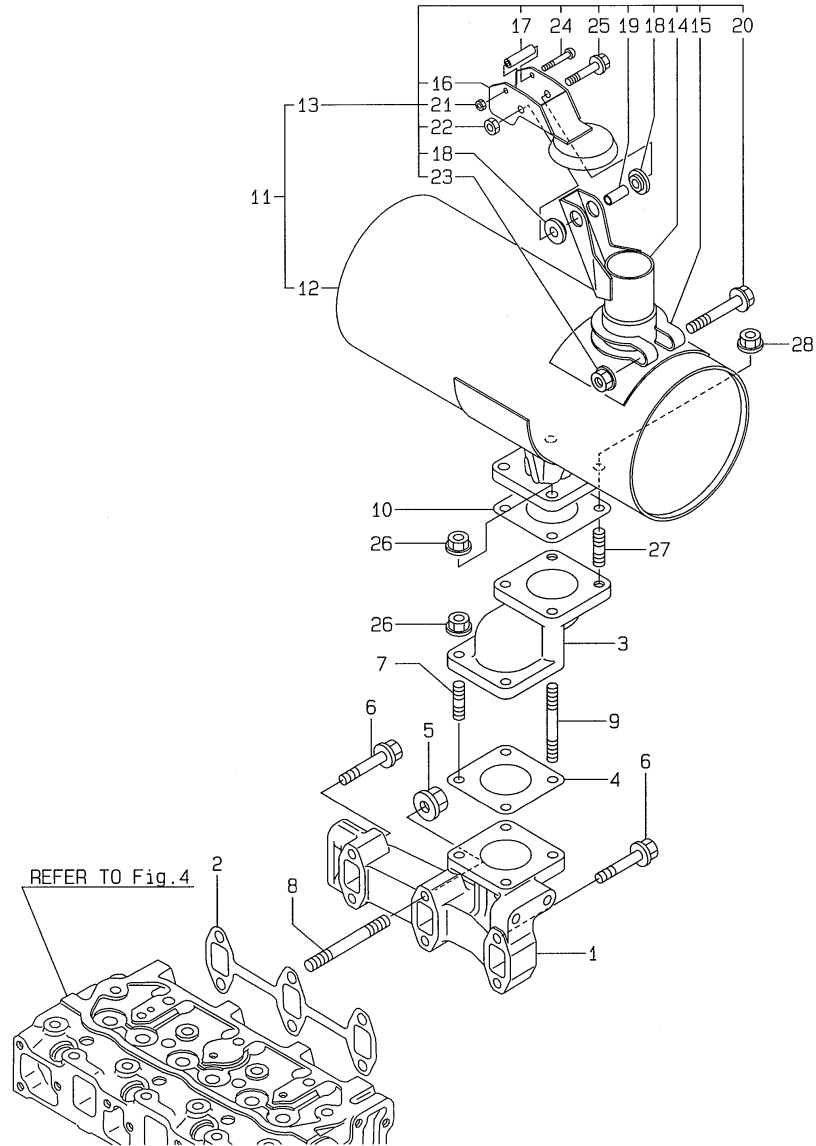
OCR10-G45201 5. SUCTION MANIFOLD & AIR CLEANER

(A)=3TNE74-SA  
(B)=3TNE74-G1A  
(C)=3TNE74-G2A

(D)=3TNE74C-SA  
(E)=3TNE74C-G1A  
(F)=

REF.	LEV.	PARTS NO.	DESCRIPTION	Q'TY						I	R
				(A)	(B)	(C)	(D)	(E)	(F)		
1	1	119660-12101	MANIFOLD,AIR INTAKE	1	1	1	1	1			
2	1	119660-12111	GASKET, SUC.MANIFOLD	1	1	1	1	1			
3	1	26106-060162	BOLT M 6X 16 PLATED	2	2	2	2	2			
4	1	26106-060402	BOLT M 6X 40 PLATED	1	1	1	1	1			
5	1	119653-12500	CLEANER ASSY, AIR	1	1	1	1	1			
7	2	119655-12560	ELEMENT	1	1	1	1	1			
9	2	119808-12540	VALVE, UNLOADER	1	1	1	1	1			
10	1	119653-12550	PIPE, AIR INTAKE	1	1	1	1	1			
11	1	119653-12600	SUPPORT,AIR CLEANER	1		1					
I	11-1	119789-12600 (A=E16295)	SUPPORT,AIR CLEANER (C=E18343)	1	1	1	1	1		N	
12	1	119865-12600	STAY	1	1	1	1	1			
16	1	23000-054000	CLAMP 54	2	2	2	2	2			
17	1	26106-060122	BOLT M 6X 12 PLATED	1	1	1	1	1			
18	1	26106-080142	BOLT 8X 14 PLATED	2	2	2	2	2			

Fig.6. EXHAUST MANIFOLD & SILENCER

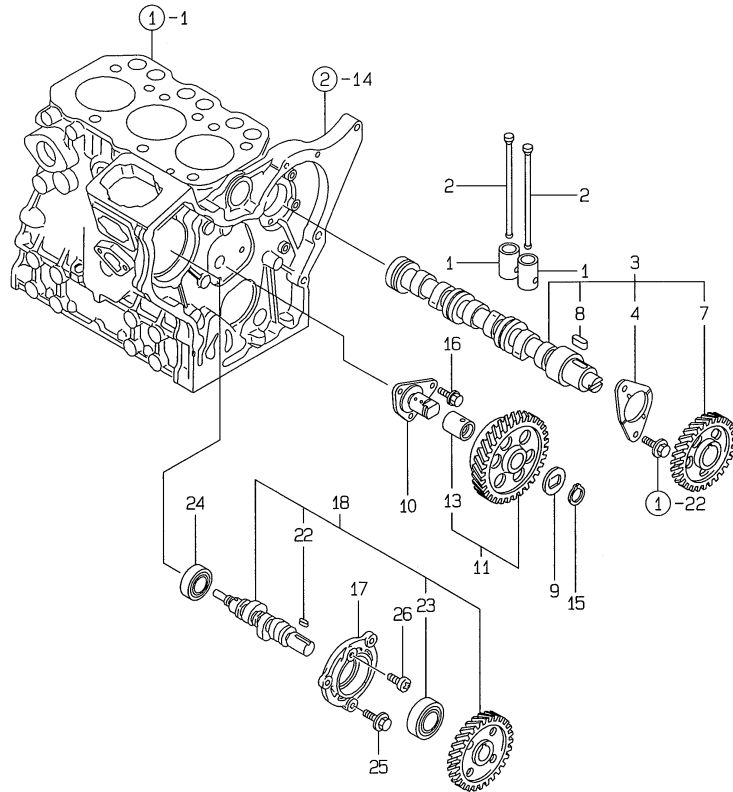


(A)=3TNE74-SA  
(B)=3TNE74-G1A  
(C)=3TNE74-G2A

(D)=3TNE74C-SA  
(E)=3TNE74C-G1A  
(F)=

REF.	LEV.	PARTS NO.	DESCRIPTION	Q'TY						I	R
				(A)	(B)	(C)	(D)	(E)	(F)		
1	1	119631-13101	MANIFOLD, EXHAUST	1	1	1	1	1			
2	1	119620-13110	GASKET, EXH.MANIFOLD	1	1	1	1	1			
3	1	119840-13150	PIPE,EXHAUST	1	1	1	1	1			
4	1	121000-13201	GASKET, SILENCER	1	1	1	1	1			
5	1	194990-22050	NUT W/WASHER 8	2	2	2	2	2			
I 5-1	1	26306-080002	NUT	2	2	2	2	2			N
		(A=E31748) (B=E32569) (C=E32001) (D=E00195) (E=E00200)									
6	1	26106-080402	BOLT M 8X 40 PLATED	4	4	4	4	4			
7	1	26216-080222	STUD M 8X 22 PLATED	2	2	2	2	2			
I 7-1	1	119131-18320	BOLT M 8X 22	2	2	2	2	2			N
		(A=E31748) (B=E32569) (C=E32001) (D=E00195) (E=E00200)									
8	1	26216-080552	STUD M 8X 55 PLATED	2	2	2	2	2			
9	1	26216-080702	STUD M 8X 70 PLATED	2	2	2	2	2			
I 9-1	1	119823-13600	BOLT M8X70	2	2	2	2	2			N
		(A=E33049) (B=E36948) (C=E33048) (D=E00201) (E=E00203)									
10	1	121000-13201	GASKET, SILENCER	1	1	1	1	1			
11	1	119620-13501	SILENCER	1	1	1	1	1			
12	2	119620-13510	MUFFLER BODY ASSY	1	1	1	1	1			
13	2	119620-13520	TAILPIPE ASSY	1	1	1	1	1			
14	3	119620-13560	TAILPIPE	1	1	1	1	1			
15	3	124664-13580	CLAMP	1	1	1	1	1			
16	3	119358-13640	RAINCAP,MUFFLER	1	1	1	1	1			
17	3	121855-13821	SPACER(A)	1	1	1	1	1			
18	3	121855-13830	SPACER(B)	2	2	2	2	2			
19	3	123500-13840	SPACER(C)	1	1	1	1	1			
20	3	26106-080552	BOLT M 8X 55 PLATED	1	1	1	1	1			
21	3	26347-040002	U-NUT M 4	1	1	1	1	1			
22	3	26347-060002	U-NUT M 6	1	1	1	1	1			
23	3	26366-080002	NUT M 8	1	1	1	1	1			
I 23-1	3	26306-080002	NUT	1	1	1	1	1			N
		(A=E31748) (B=E32569) (C=E32001) (D=E00195) (E=E00200)									
24	3	26557-040352	SCREW M 4X 35	1	1	1	1	1			
25	3	26106-060402	BOLT M 6X 40 PLATED	1	1	1	1	1			
26	1	194990-22050	NUT W/WASHER 8	4	4	4	4	4			
I 26-1	1	26306-080002	NUT	4	4	4	4	4			N
		(A=E31748) (B=E32569) (C=E32001) (D=E00195) (E=E00200)									
27	1	26216-080222	STUD M 8X 22 PLATED	2	2	2	2	2			
I 27-1	1	119131-18320	BOLT M 8X 22	2	2	2	2	2			N
		(A=E31748) (B=E32569) (C=E32001) (D=E00195) (E=E00200)									
28	1	194990-22050	NUT W/WASHER 8	2	2	2	2	2			
I 28-1	1	26306-080002	NUT	2	2	2	2	2			N
		(A=E31748) (B=E32569) (C=E32001) (D=E00195) (E=E00200)									

Fig.7. CAMSHAFT & DRIVING GEAR



OCR10-G45201 7. CAMSHAFT & DRIVING GEAR

(A)=3TNE74-SA  
(B)=3TNE74-G1A  
(C)=3TNE74-G2A

(D)=3TNE74C-SA  
(E)=3TNE74C-G1A  
(F)=

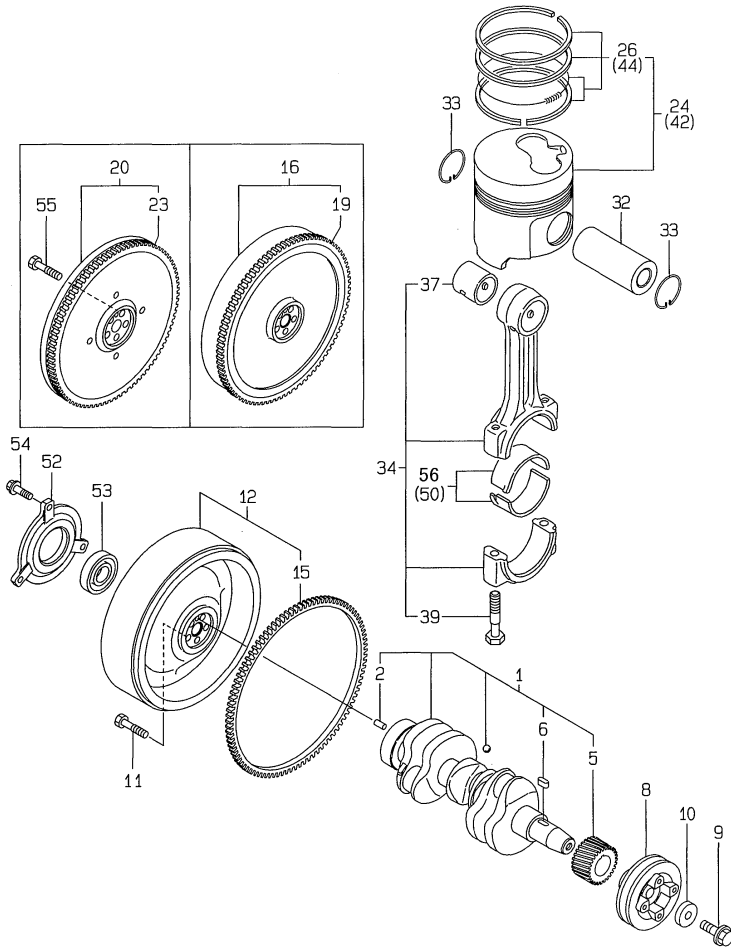
REF.	LEV.	PARTS NO.	DESCRIPTION	Q'TY						I	R
				(A)	(B)	(C)	(D)	(E)	(F)		
1	1	119620-14200	TAPPET	6	6	6	6	6			
2	1	119620-14401	ROD, PUSH	6	6	6	6	6			
3	1	119629-14580	CAMSHAFT ASSY	1	1	1	1	1			
4	2	119620-02450	BEARING, THRUST	1	1	1	1	1			
7	2	119620-14100	GEAR, CAMSHAFT	1	1	1	1	1			
8	2	22512-040120	KEY 4X 12	1	1	1	1	1			
9	1	119660-25022	RETAINER, IDLE GEAR	1	1	1	1	1			
10	1	119660-25052	SHAFT, IDLE GEAR	1	1	1	1	1			
11	1	119620-25102	GEAR W/BUSH, IDLE	1	1	1	1	1			
13	2	119620-25912	BUSH	1	1	1	1	1		1	
15	1	22242-000200	CIRCLIP 20	1	1	1	1	1			
16	1	26106-060122	BOLT M 6X 12 PLATED	3	3	3	3	3			
17	1	119660-01821	BEARING, FUEL CAM.	1	1	1	1	1			
18	1	719660-14590	CAM ASSY, F.I. PUMP	1	1	1	1	1			
22	2	22512-040120	KEY 4X 12	1	1	1	1	1			
23	2	24102-063034	BALL BEARING 6303U	1	1	1	1	1			
24	1	24101-062034	BALL BEARING	1	1	1	1	1			
25	1	26106-060162	BOLT M 6X 16 PLATED	3	3	3	3	3			
26	1	26587-080102	SCREW M 8X 10	1	1	1	1	1			

Remarks  
(1) REPAIR PART.

Fig.8. CRANKSHAFT & PISTON

(A)=3TNE74-SA  
(B)=3TNE74-G1A  
(C)=3TNE74-G2A

(D)=3TNE74C-SA  
(E)=3TNE74C-G1A  
(F)=



REF.	LEV.	PARTS NO.	DESCRIPTION	QTY						I	R
				(A)	(B)	(C)	(D)	(E)	(F)		
1	1	119623-21700	CRANKSHAFT ASSY	1	1	1	1	1			
2	2	129100-01580	PARALLEL PIN 8X16	1	1	1	1	1			
5	2	119644-21200	CRANKGEAR	1	1	1	1	1			
6	2	22512-040120	KEY 4X 12	1	1	1	1	1			
8	1	119660-21651	V-PULLEY	1	1	1	1	1			
9	1	119621-21680	BOLT M12X1.25,FLANGE	1	1	1	1	1			
10	1	119620-21941	WASHER	1	1	1	1	1			
11	1	121111-21501	BOLT, FLYWHEEL	5	5	5	5	5			
12	1	119688-21590	FLYWHEEL CMP	1	1	1	1	1			
15	2	119865-21600	GEAR, RING	1	1	1	1	1			
16	1	119600-21580	FLYWHEEL ASSY	1	1	1	1	1			
19	2	119865-21600	GEAR, RING	1	1	1	1	1			
20	1	119620-21591	FLYWHEEL W/RING GEAR	1	1	1	1	1			
23	2	124060-21600	GEAR, RING	1	1	1	1	1			
24	1	119623-22080	PISTON W/RING	3	3	3	3	3			
26	2	119623-22500	RING SET,PISTON	3	3	3	3	3			
32	1	114350-22301	PIN, PISTON D=21	3	3	3	3	3			
33	1	22252-000210	CIRCLIP 21	6	6	6	6	6			
34	1	719620-23100	ROD ASSY, CONNECTING	3	3	3	3	3			
37	2	119620-23910	BUSH, PISTON PIN	3	3	3	3	3		1	
39	2	105225-23200	BOLT, ROD	6	6	6	6	6			
42	1	119623-22900	PISTON ASSY(O.S=0.25	3	3	3	3	3		2	
44	2	119623-22950	RING COMP.,0.25 O.S.	3	3	3	3	3		2	
50	1	719620-23610	BEARING,PIN U.S=0.25	3	3	3	3	3		3	
52	1	119888-21450	RETAINER, BEARING	1			1				
53	1	24107-062054	BALL BEARING	1			1				
54	1	26106-080222	BOLT M 8X 22 PLATED	3			3				
55	1	119620-21500	BOLT, FLYWHEEL	5		5	5				
56	1	719620-23600	BEARING, CRANKPIN	3	3	3	3	3			

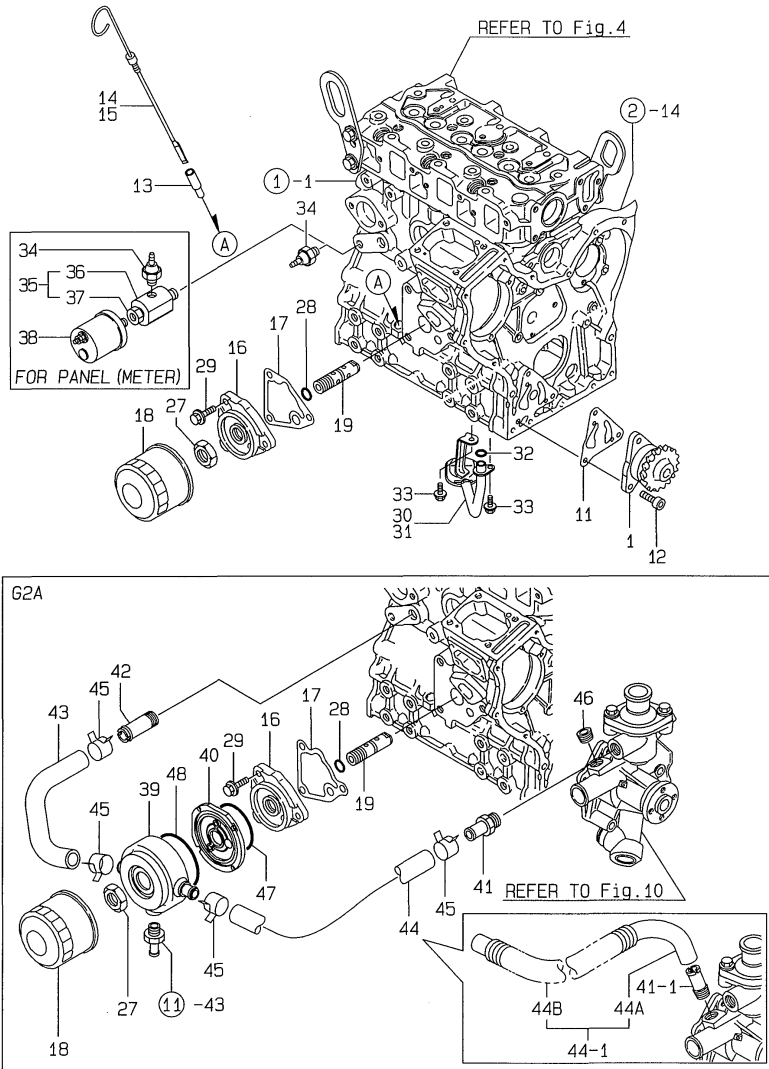
Remarks

- (1) REPAIR PART.
- (2) OVER-SIZE(O.S=0.25)PART.
- (3) UNDER-SIZE(U.S=0.25)PART.

Fig.9. LUB.OIL SYSTEM

(A)=3TNE74-SA  
(B)=3TNE74-G1A  
(C)=3TNE74-G2A

(D)=3TNE74C-SA  
(E)=3TNE74C-G1A  
(F)=



REF.	LEV.	PARTS NO.	DESCRIPTION	Q'TY						I	R
				(A)	(B)	(C)	(D)	(E)	(F)		
1	1	119660-32001	PUMP ASSY, LUB. OIL	1	1	1	1	1			
11	1	119660-32020	GASKET, L.O.PUMP	1	1	1	1	1			
12	1	26450-060202	BOLT M 6X 20	3	3	3	3	3			
13	1	121520-34810	GUIDE, DIPSTICK	1	1	1	1	1			
14	1	119600-34800	DIPSTICK, LUB. OIL	1	1		1	1			
15	1	119600-34820	DIPSTICK, LUB. OIL					1			
I	15-1	119623-34820	DIPSTICK (C=E18343)			1					N
16	1	119660-35102	BRACKET, OIL FILTER	1	1	1	1	1			
17	1	119660-35113	GASKET, BRACKET	1	1	1	1	1			
18	1	119305-35150	FILTER, LUB. OIL	1	1	1	1	1			
19	1	119660-35300	VALVE ASSY,OIL PRESS	1	1	1	1	1			
I	19-1	129120-35301	VALVE ASSY,OIL PRESS (C=E18343)			1					N
27	1	129150-35350	NUT	1	1	1	1	1			
28	1	24311-000160	O-RING 1A P-16.0	1	1	1	1	1			
29	1	26106-080202	BOLT M 8X 20 PLATED	3	3	3	3	3			
30	1	119600-35081	PIPE ASSY, LUB.OIL	1	1	1	1	1			
I	30-1	119623-35080	PIPE ASSY, LUB. OIL (A=E33049) (B=E36948) (D=E00201) (E=E00203)	1	1	1	1	1			N
31	1	119600-35091	PIPE ASSY,OIL INTAKE			1					
32	1	24311-000120	O-RING 1A P 12.0	1	1	1	1	1			
I	32-1	24311-000110	O-RING 1A P-11.0 (A=EXXX) (B=EXXX) (C=EXXX) (D=EXXX) (E=EXXX)	1	1	1	1	1			R
I	32-2	119209-35030	O-RING (A=E25948) (B=E31094) (C=E25947) (D=E00190) (E=E00169)	1	1	1	1	1			R
33	1	26106-060102	BOLT 6X 10 PLATED	2	2	2	2	2			
34	1	124160-39450	SWITCH, OIL PRESSURE	1	1	1	1	1			
35	1	171375-39600	DAMPER ASSY	1	1	1	1	1			1
I	35-1	127695-39710	JOINT (A=E13639) (C=E18343)	1	1	1	1	1			N 1
I	36	2 129470-39610	DAMPER (A=E13639) (C=E18343)	1		1					Z 1
I	37	2 23161-020100	BUSH PT1/4X1/8 (A=E13639) (C=E18343)	1		1					Z 1
38	1	144626-91560	SENDER UNIT	1	1	1	1	1			1
39	1	119642-33030	COOLER, OIL			1					
40	1	119642-33100	BRACKET			1					
41	1	119265-44400	JOING, PIPE M16			1					
I	41-1	121851-11970	JOINT, PIPE (C=E19709)			1					N
42	1	129122-44480	JOINT			1					
43	1	119642-49030	PIPE			1					
44	1	129403-49050	PIPE,COOLER-C.W.PUMP			1					
I	44-1	119642-49050	PIPE ASSY (C=E19709)			1					N
I	44A	2 119642-49060	PIPE (C=E19709)			1					W
I	44B	2 119642-49090	TUBE, CORRUGATED (C=E19709)			1					W
45	1	23000-022000	CLAMP 22			4					

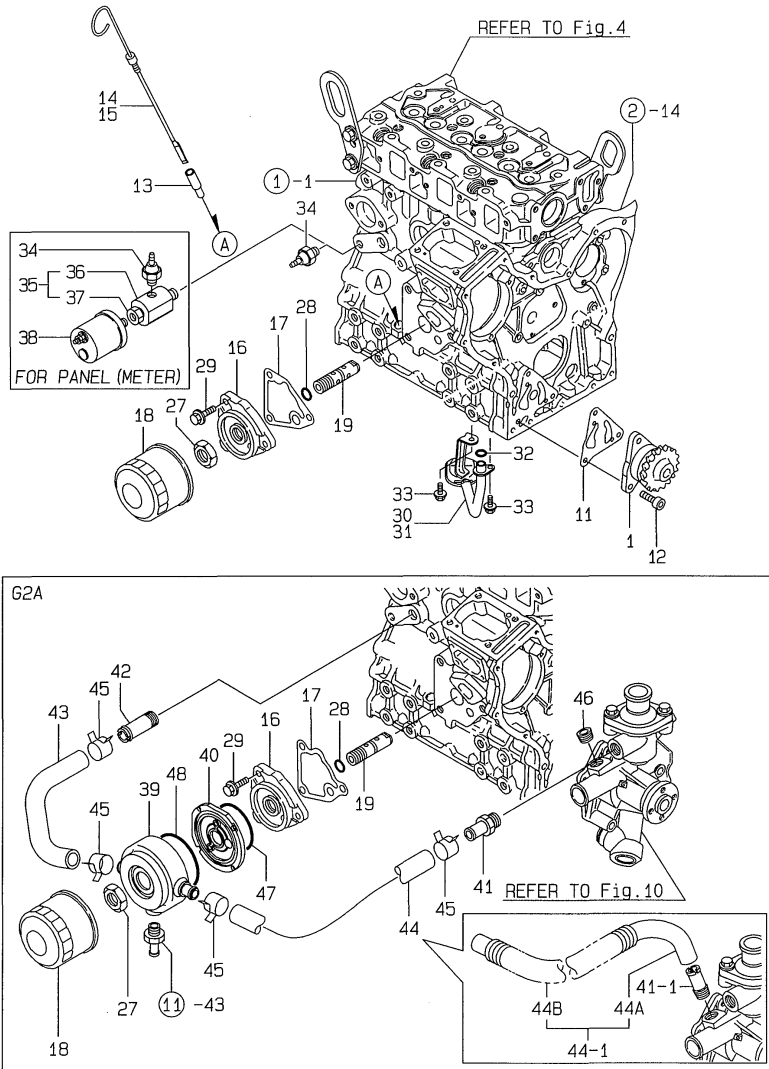
Remarks  
(1) FOR PANEL(METER).

Fig.9. LUB.OIL SYSTEM

(A)=3TNE74-SA  
(B)=3TNE74-G1A  
(C)=3TNE74-G2A

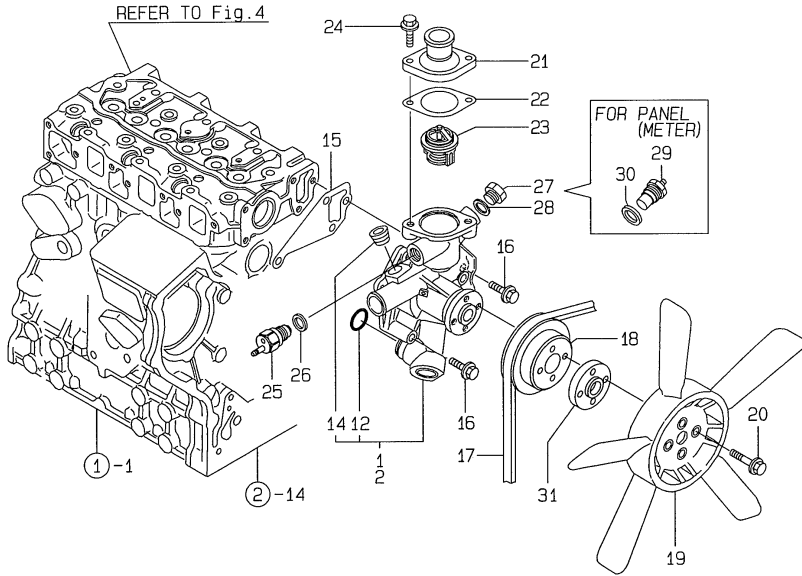
(D)=3TNE74C-SA  
(E)=3TNE74C-G1A  
(F)=

REF.	LEV.	PARTS NO.	DESCRIPTION	Q'TY						I	R
				(A)	(B)	(C)	(D)	(E)	(F)		
I	46	1 23871-030000	PLUG PT3/8,SCREW (C=E19709)			1					Z
	47	1 24321-000600	O-RING 1A G-60.0			1					
	48	1 24321-000700	O-RING 1A G70.0,NBR			1					



Remarks  
(1) FOR PANEL(METER).

Fig.10. COOLING WATER SYSTEM



OCR10-G45201 10. COOLING WATER SYSTEM

(A)=3TNE74-SA  
(B)=3TNE74-G1A  
(C)=3TNE74-G2A

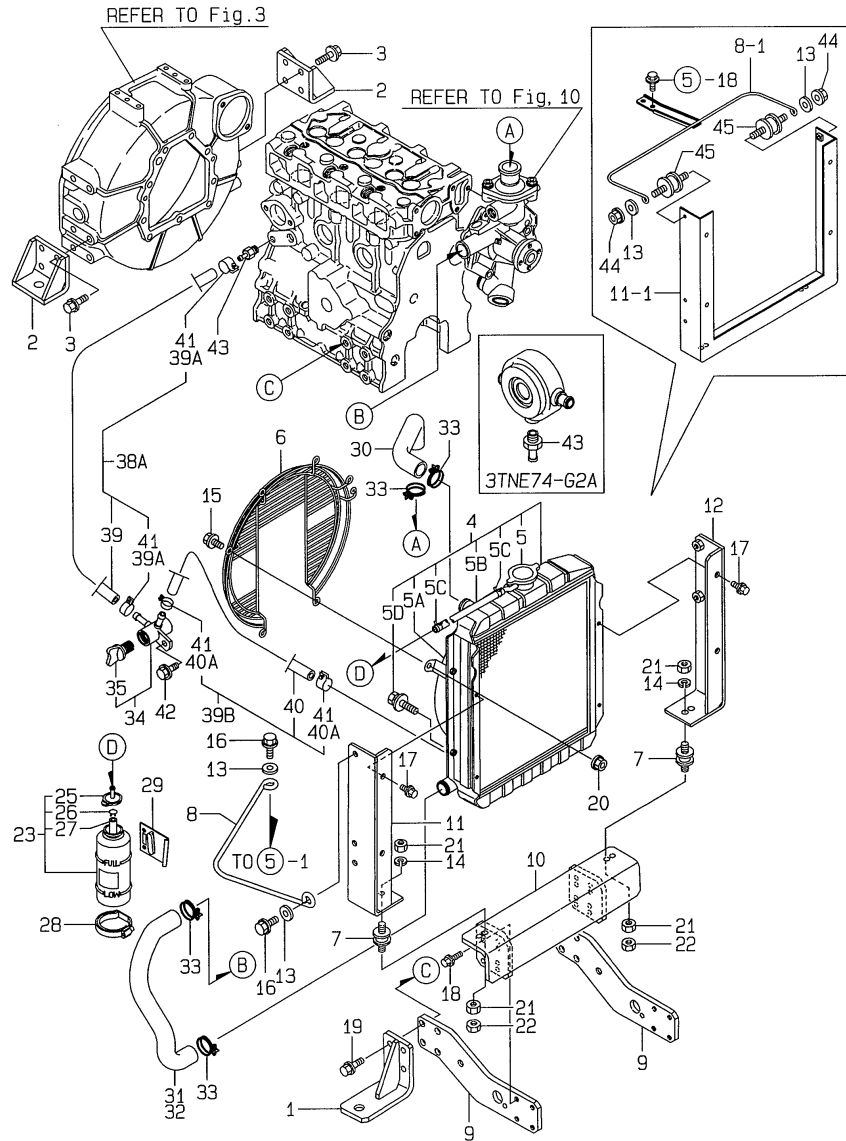
(D)=3TNE74C-SA  
(E)=3TNE74C-G1A  
(F)=

REF.	LEV.	PARTS NO.	DESCRIPTION	Q'TY						I	R
				(A)	(B)	(C)	(D)	(E)	(F)		
1	1	119660-42004	PUMP ASSY, WATER	1	1		1	1			
I	1-1	119660-42005	PUMP ASSY, WATER	1	1		1	1			N
		(A=E21090) (B=E21227)	(D=E00138) (E=E00133)								
I	1-2	119660-42006	PUMP ASSY, WATER	1	1		1	1			N
		(A=E37021) (B=E38230)	(D=E00235) (E=E00236)								
2	1	119642-42000	PUMP ASSY, C. WATER				1				
12	2	119620-42320	O-RING	1	1	1	1	1	1		
14	2	23871-030000	PLUG PT3/8,SCREW	1	1		1	1	1		
I	14-1	23876-030000	PLUG PT3/8,SCREW	1	1		1	1	1		N
		(A=E15206) (B=E15206)	(D=E15206) (E=E15206)								
15	1	119620-42020	GASKET, PUMP	1	1	1	1	1	1		
16	1	26106-080452	BOLT M 8X 45 PLATED	4	4	4	4	4	4		
17	1	119650-42291	V-BELT FM=35.0	1	1	1	1	1	1		
18	1	119660-42350	V-PULLEY, C.W. PUMP	1	1	1	1	1	1		
19	1	124700-44740	FAN, COOLING	1	1	1	1	1	1		
20	1	26014-060162	BOLT M 6X 16	4	4	4	4	4	4		
I	20-1	26106-060202	BOLT M 6X 20 PLATED	4	4	4					N
		(A=E15206) (C=E18343)									
21	1	129350-49530	COVER, THERMOSTAT	1	1	1	1	1	1		
22	1	129350-49541	GASKET, COVER	1	1	1	1	1	1		
23	1	129350-49800	THERMOSTAT (71C	1	1	1	1	1	1		
24	1	26106-080202	BOLT M 8X 20 PLATED	2	2	2	2	2	2		
25	1	121250-44901	SWITCH, THERMO(110 C	1	1	1	1	1	1		
26	1	124465-44950	GASKET 16	1	1	1	1	1	1		
27	1	121450-42450	PLUG M16	1	1	1	1	1	1		
28	1	124465-44950	GASKET 16	1	1	1	1	1	1		
29	1	124250-49351	THERMOMETER	1	1	1	1	1	1		1
30	1	129150-49360	GASKET 10	1	1	1	1	1	1		1
I	31	124574-44761	SPACER	1	1	1					W
		(A=E15206) (C=E18343)									

Remarks  
(1) FOR PANEL(METER).



Fig.11. RADIATOR



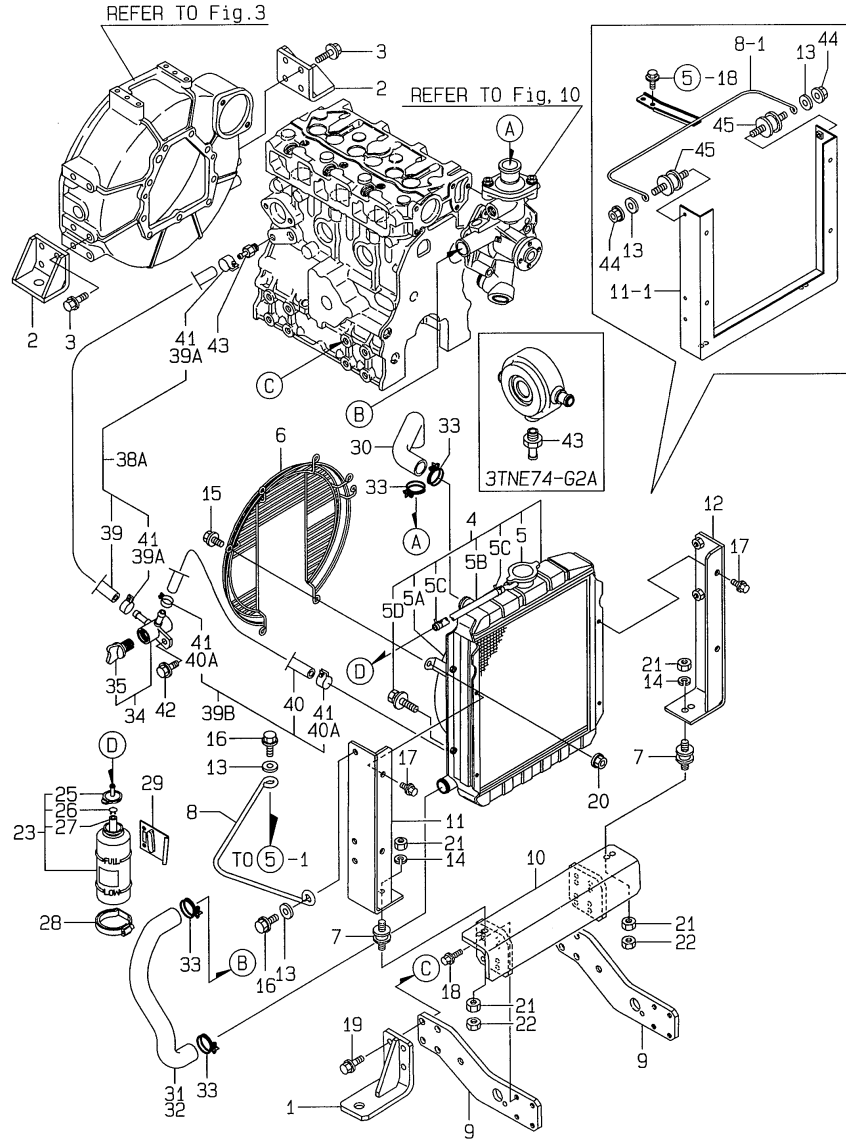
(A)=3TNE74-SA  
(B)=3TNE74-G1A  
(C)=3TNE74-G2A

(D)=3TNE74C-SA  
(E)=3TNE74C-G1A  
(F)=

REF.	LEV.	PARTS NO.	DESCRIPTION	QTY						I	R
				(A)	(B)	(C)	(D)	(E)	(F)		
1	1	119288-08100	BRACKET (A), ENGINE	2	2		2	2			
2	1	119888-08110	BRACKET (B), ENGINE	2	2		2	2			
3	1	26106-100202	BOLT M10X 20 PLATED	8	8		8	8			
4	1	119621-44500	RADIATOR	1	1	1	1	1			
5	2	119259-44570	CAP, RADIATOR	1	1	1	1	1			
I 5A	2	X2411365340	SHROUD, FAN	1	1	1	1	1			W
		(A=FROM 1ST) (B=FROM 1ST) (C=FROM 1ST) (D=FROM 1ST) (E=FROM 1ST)		1	1	1	1	1			W
I 5B	2	129132-44530	HOSE, C.WATER	1	1	1	1	1			W
		(A=FROM 1ST) (B=FROM 1ST) (C=FROM 1ST) (D=FROM 1ST) (E=FROM 1ST)		1	1	1	1	1			W
I 5C	2	121250-44590	CLAMP	2	2	2	2	2			W
		(A=FROM 1ST) (B=FROM 1ST) (C=FROM 1ST) (D=FROM 1ST) (E=FROM 1ST)		2	2	2	2	2			W
I 5D	2	26014-080162	BOLT M 8X 16	4	4	4	4	4			W
		(A=FROM 1ST) (B=FROM 1ST) (C=FROM 1ST) (D=FROM 1ST) (E=FROM 1ST)		4	4	4	4	4			W
6	1	119621-44560	FAN-GUARD	1	1	1	1	1			
7	1	121400-44650	ABSORBER, SHOCK	2	2		2	2			
8	1	119688-44940	RETAINING BAR	1	1		1	1			
I 8-1	1	119688-44941	STAY, RADIATOR	1	1		1	1			N
		(A=E36590) (B=E36948) (D=E00235) (E=E00222)		1	1		1	1			N
9	1	119688-44950	BRACKET (A)	2	2		2	2			
10	1	119688-44961	BRACKET (B), RAD	1	1		1	1			
11	1	119688-44971	BRACKET (L)	1	1		1	1			
I 11-1	1	119688-44972	SUPPORT	1	1		1	1			N
		(A=E36590) (B=E36948) (D=E00235) (E=E00222)		1	1		1	1			N
I 12	1	119688-44981	BRACKET (R)	1	1		1	1			Z
		(A=E36590) (B=E36948) (D=E00235) (E=E00222)		1	1		1	1			Z
13	1	22137-080000	WASHER 8, POLISHED	2	2		2	2			
14	1	22217-100000	SPRING WASHER 10	2	2		2	2			
15	1	26106-080122	BOLT M 8X 12 PLATED	6	6	6	6	6			
I 16	1	26106-080162	BOLT M 8X 16 PLATED	2	2		2	2			Z
		(A=E36590) (B=E36948) (D=E00235) (E=E00222)		2	2		2	2			Z
17	1	26106-080202	BOLT M 8X 20 PLATED	4	4		4	4			
18	1	26106-080252	BOLT M 8X 25 PLATED	8	8		8	8			
19	1	26116-100302	BOLT 10X30	8	8		8	8			
20	1	26366-080002	NUT M 8	6	6	6	6	6			
I 20-1	1	26306-080002	NUT	6	6	6	6	6			N
		(A=EXXX) (B=EXXX) (C=EXXX) (D=EXXX) (E=EXXX)		6	6	6	6	6			N
21	1	26716-100002	NUT 10	4	4		4	4			
22	1	26756-100002	LOCK NUT M10 PLATED	2	2		2	2			
23	1	124450-44510	SUB-TANK ASSY	1	1	1	1	1			
25	2	124450-44530	CAP	1	1	1	1	1			
26	2	124450-44560	CLAMP	1	1	1	1	1			
27	2	23061-070230	PIPE 7X 230	1	1	1	1	1			
28	1	124450-44550	CLAMP, SUB-TANK	1	1	1	1	1			
29	1	121256-44600	BRACKET, SUB-TANK	1	1	1	1	1			
30	1	119688-49010	PIPE (A), C. WATER	1	1	1	1	1			
31	1	119645-49020	PIPE (B), C. WATER	1	1	1	1	1			
32	1	119280-49020	PIPE (B), C. WATER	1	1		1	1			
33	1	23010-038000	CLAMP 38	4	4	4	4	4			
34	1	129150-49100	COCK ASSY, 3-WAY	1	1	1	1	1			
35	2	129150-49080	COCK, DRAIN	1	1	1	1	1			
I 38A	1	129210-49250	PIPE, WATER DRAIN	1	1		1	1			W

N:Old  $\begin{matrix} \leftarrow \text{Yes} \\ \text{No} \end{matrix}$  New, Q:Old  $\begin{matrix} \leftarrow \text{No} \\ \text{Yes} \end{matrix}$  New, R:Old  $\begin{matrix} \leftarrow \text{Yes} \\ \text{Yes} \end{matrix}$  New, S:Old  $\begin{matrix} \leftarrow \text{No} \\ \text{No} \end{matrix}$  New, W:Add, Z:Discontinued, F:Interchangeable by set, K:Q'ty Change  
++ CONTINUE ++  
(C)Copy Rights YANMAR CO.,LTD.

Fig.11. RADIATOR

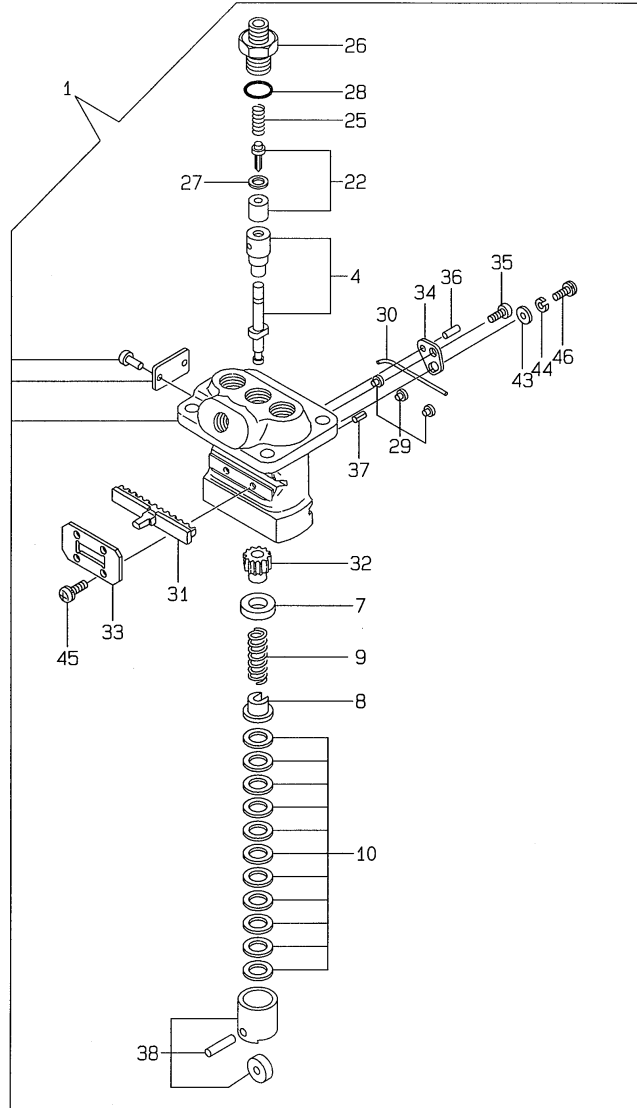


(A)=3TNE74-SA  
(B)=3TNE74-G1A  
(C)=3TNE74-G2A

(D)=3TNE74C-SA  
(E)=3TNE74C-G1A  
(F)=

REF.	LEV.	PARTS NO.	DESCRIPTION	Q'TY						I	R
				(A)	(B)	(C)	(D)	(E)	(F)		
		(A=EXXX) (B=EXXX) (D=EXXX) (E=EXXX)									
I	39	2 121750-49150	PIPE, C. WATER	1	1		1	1			
I	39A	2 124766-59050	CLAMP 12	2	2		2	2			W
I	39B	1 129210-49110	PIPE ASSY, DRAIN	1	1		1	1			W
		(A=EXXX) (B=EXXX) (D=EXXX) (E=EXXX)									
I	40	2 121023-49150	HOSE, WATER DRAIN 165	1	1		1	1			
I	40A	2 124766-59050	CLAMP 12	2	2		2	2			W
		(A=EXXX) (B=EXXX) (D=EXXX) (E=EXXX)									
I	41	1 124766-59050	CLAMP 12	4	4		4	4			Z
		(A=EXXX) (B=EXXX) (D=EXXX) (E=EXXX)									
		42 1 26106-080162	BOLT M 8X 16 PLATED	1	1		1	1			
		43 1 121550-49111	JOINT PT1/4	1	1	1	1	1			
I	44	1 26366-060002	NUT M 6	2	2		2	2			W
		(A=E36590) (B=E36948) (D=E00235) (E=E00222)									
I	45	1 127694-91050	GROMMET	2	2		2	2			W
		(A=E36590) (B=E36948) (D=E00235) (E=E00222)									

Fig.12. FUEL INJECTION PUMP



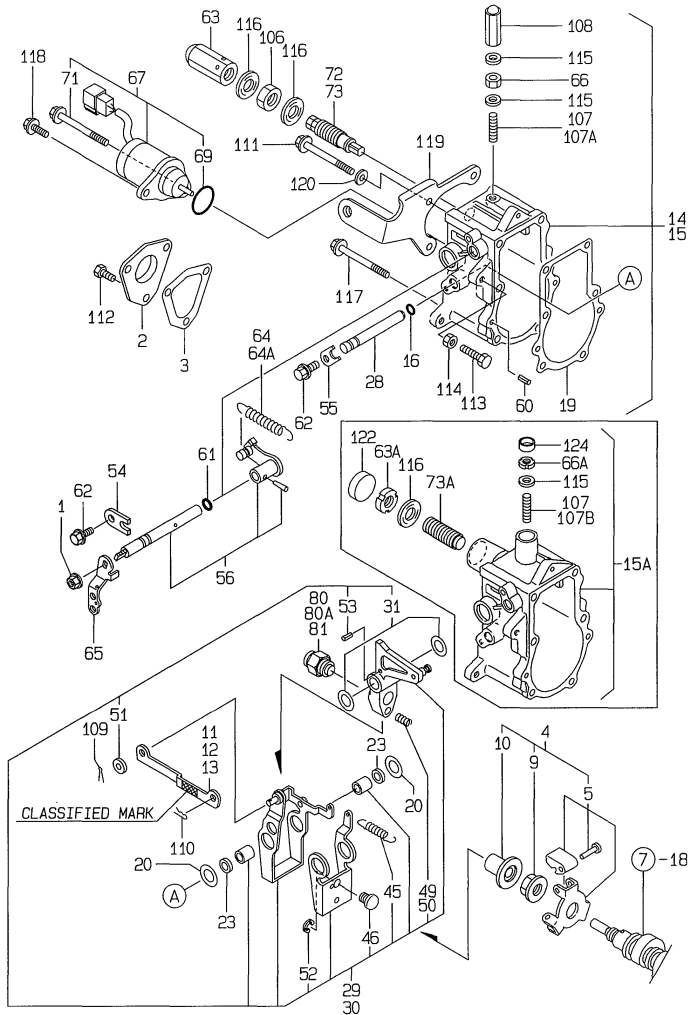
OCR10-G45201 12. FUEL INJECTION PUMP

(A)=3TNE74-SA  
(B)=3TNE74-G1A  
(C)=3TNE74-G2A

(D)=3TNE74C-SA  
(E)=3TNE74C-G1A  
(F)=

REF.	LEV.	PARTS NO.	DESCRIPTION	Q'TY						I	R
				(A)	(B)	(C)	(D)	(E)	(F)		
1	1	719621-51100	PUMP ASSY, F.INJECT.	1	1	1	1	1			
4	2	119620-51101	PLUNGER W/BARREL	3	3	3	3	3			
7	2	119620-51170	RETAINER	3	3	3	3	3			
8	2	119620-51180	RETAINER	3	3	3	3	3			
9	2	119620-51190	SPRING, PLUNGER	3	3	3	3	3			
10	2	119620-51250	SHIM PACK	3	3	3	3	3			
22	2	119620-51300	VALVE W/SEAT, DELIV.	3	3	3	3	3			
25	2	105546-51330	SPRING, DELIV. VALVE	3	3	3	3	3			
26	2	119620-51340	HOLDER, DELIV. VALVE	3	3	3	3	3			
27	2	119620-51350	GASKET, DELIVERY	3	3	3	3	3			
28	2	119620-51370	O-RING	3	3	3	3	3			
29	2	119620-51450	GUIDE, PLUNGER	3	3	3	3	3			
30	2	119620-51461	PIN	1	1	1	1	1			
31	2	119660-51500	RACK	1	1	1	1	1			
32	2	119620-51510	PINION	3	3	3	3	3			
33	2	119660-51530	RETAINER, RACK	1	1	1	1	1			
34	2	119620-51650	PLATE	2	2	2	2	2			
35	2	119620-51660	SCREW	2	2	2	2	2			
36	2	119620-51670	PIN	2	2	2	2	2			
37	2	119620-51680	PIN	1	1	1	1	1			
38	2	119620-51700	TAPPET ASSY	3	3	3	3	3			
I 43	2	22137-040000	WASHER 4, POLISHED	2	2	2	2	2		Z	
		(A=EXXX) (B=EXXX) (C=EXXX) (D=EXXX) (E=EXXX)									
I 44	2	22217-040000	SPRING WASHER 4	2	2	2	2	2		Z	
		(A=EXXX) (B=EXXX) (C=EXXX) (D=EXXX) (E=EXXX)									
45	2	26022-040082	SCREW M 4X 8	4	4	4	4	4			
46	2	26587-040102	SCREW M 4X 10	2	2	2	2	2			
I 46-1	2	26033-040102	SCREW M 4X 10	2	2	2	2	2		R	
		(A=EXXX) (B=EXXX) (C=EXXX) (D=EXXX) (E=EXXX)									

Fig.13. GOVERNOR



Remarks

(1) SELECTIVE PARTS: CERTAIN THE CLASSIFICATION MARK, THEN PLACE YOUR ORDER(REFER TO ILLUSTRATION)  
 (2) REPAIR PART

(A)=3TNE74-SA  
 (B)=3TNE74-G1A  
 (C)=3TNE74-G2A

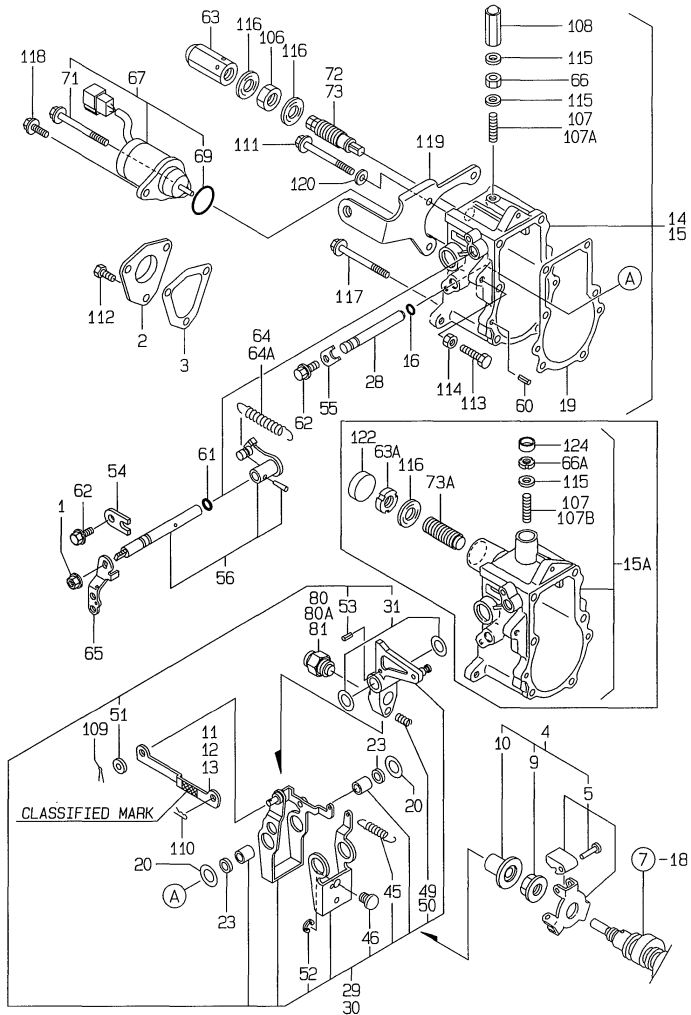
(D)=3TNE74C-SA  
 (E)=3TNE74C-G1A  
 (F)=

REF.	LEV.	PARTS NO.	DESCRIPTION	QTY						I	R
				(A)	(B)	(C)	(D)	(E)	(F)		
1	1	194990-22050	NUT W/WASHER 8	1	1	1	1	1			
2	1	119660-61060	COVER, GOVERNOR CASE	1	1	1	1	1			
3	1	119660-61071	GASKET, CASE	1	1	1	1	1			
4	1	119600-61100	DRIVING SET, GOV.	1	1	1	1	1			
5	2	119600-61200	WEIGHT ASSY, GOV.	1	1	1	1	1			
9	2	119660-61300	NUT, GOVERNOR WEIGHT	1	1	1	1	1			
10	2	119660-61341	SLEEVE, GOVERNOR	1	1	1	1	1			
11	1	119660-61121	LINK L=88.8(NO COLOR)	1	1	1	1	1		1	
12	1	119660-61140	LINK L=88.6(WHITE)	1	1	1	1	1		1	
13	1	119660-61150	LINK L=89.0(RED)	1	1	1	1	1		1	
14	1	119632-61200	CASE ASSY, GOVERNOR	1	1						
15	1	119288-61200	CASE ASSY, GOVERNOR			1					
I 15A	1	119623-61200	CASE ASSY, GOVERNOR				1	1			
16	2	129155-51280	O-RING S6	1	1	1	1	1			
19	2	119660-61052	GASKET, CASE	1	1	1	1	1			
20	2	119660-61460	SHIM SET	1	1	1	1	1			
23	2	129155-61480	SPACER ASSY	2	2	2	2	2			
28	2	119660-61491	SHAFT,GOVERNOR LEVER	1	1	1	1	1			
29	2	119232-61510	LEVER ASSY, GOVERNOR	1	1			1	1		
30	2	119288-61510	LEVER ASSY, GOVERNOR			1					
31	3	174307-51700	SHIM SET	2	2	2	2	2			
45	3	119232-61540	SPRING, LEVER	1	1	1	1	1			
46	3	119600-61541	SHIFTER,P.T.O.	1	1	1	1	1			
49	3	119660-61651	SPRING, STARTING	1	1			1	1		
50	3	119600-61650	SPRING, STARTING			1					
51	3	22117-040000	WASHER 4	1	1	1	1	1			
52	3	22272-000040	CIRCLIP E- 4	1	1	1	1	1			
53	3	22351-030014	SPRING PIN 3X14	1	1	1	1	1			
54	2	119600-61900	RETAINER, SHAFT	1	1	1	1	1			
55	2	119660-61901	RETAINER, SHAFT	1	1	1	1	1			
56	2	119285-66080	SHAFT ASSY,REGULATOR	1	1	1	1	1			
60	2	22351-040010	SPRING PIN 4X10	2	2	2	2	2			
61	2	24341-000070	O-RING 1A S-7.0	1	1	1	1	1			
62	2	26106-060102	BOLT 6X 10 PLATED	2	2	2	2	2			
63	1	129100-61930	NUT, CAP	1	1	1					
I 63A	1	119685-61940	CARB NUT(FO-LIMIT				1	1			
64	1	119600-66020	SPRING, REGULATOR	1		1	1				
I 64A	1	119789-66010	SPRING, REGULATOR		1			1			
65	1	119621-66051	LEVER, REGULATOR	1	1	1	1	1			
66	1	124550-66370	LOCK NUT M 6	1	1	1					
I 66A	1	119685-61950	CARB NUT(HI-IDLE				1	1			
67	1	119653-66500	ENGINE STOP DEVICE	1	1	1	1	1			
69	2	24341-000280	O-RING 1A S-28.0	1	1	1	1	1			
71	2	26106-060952	BOLT M 6X 95 PLATED	1	1	1	1	1			
72	1	119629-66510	TORQUE SPRING ASSY	1	1						
73	1	119600-66530	TORQUE SPRING ASSY			1					
I 73A	1	119489-66500	FUEL LIMITR(CARB ASY				1	1			
I 80	1	119600-66720	ANGLEICH ASSY	1			1				
I 80A	1	119610-66700	ANGLEICH ASSY		1			1			
I 81	1	119260-66720	ANGLEICH ASSY			1					
106	1	26776-120002	LOCK NUT M12 PLATED	1	1	1					

Fig.13. GOVERNOR

(A)=3TNE74-SA  
(B)=3TNE74-G1A  
(C)=3TNE74-G2A

(D)=3TNE74C-SA  
(E)=3TNE74C-G1A  
(F)=



REF.	LEV.	PARTS NO.	DESCRIPTION	Q'TY						I	R	
				(A)	(B)	(C)	(D)	(E)	(F)			
		107	1	121575-66830	SCREW, ADJUST	1		1		1		
I		107A	1	171002-66830	SCREW, ADJUST		1					
I		107B	1	119988-61460	BOLT, REVOL. LIMIT				1			
		108	1	119600-66840	NUT, CAP	1	1	1				
		109	1	22360-040000	SNAP PIN 4	1	1	1	1	1		
		110	1	22360-060000	SNAP PIN 6	1	1	1	1	1		
		111	1	26106-060702	BOLT M 6X 70 PLATED	2	2	2	2	2		
		112	1	26116-050102	BOLT M 5X 10 PLATED	3	3	3	3	3		
		113	1	26116-060304	BOLT M 6X 30 PLATED	1	1	1	1	1		
		114	1	26756-060002	LOCK NUT 6	1	1	1	1	1		
		115	1	22190-060003	SEAL WASER 6	2	2	2	1	1		
		116	1	22190-120002	SEAL WASHER 12	2	2	2	1	1		
		117	1	26106-060752	BOLT M 6X 75 PLATED	3	3	3	3	3		
		118	1	121465-59950	BOLT M 6X 16, PLATED	1	1	1	1	1		
		119	1	119288-55900	BRACKET, FUEL FILTER	1	1	1				
I		119-1	1	119288-55901	BRACKET	1	1	1	1	1		N
				(A=E18548)	(B=E19213)	(C=E18343)						
		120	1	22111-060000	WASHER 6	3	3	3	3	3		
I		122	1	119621-66610	PLUG 22				1	1		2
I		124	1	119621-66710	PLUG 14				1	1		2

Remarks

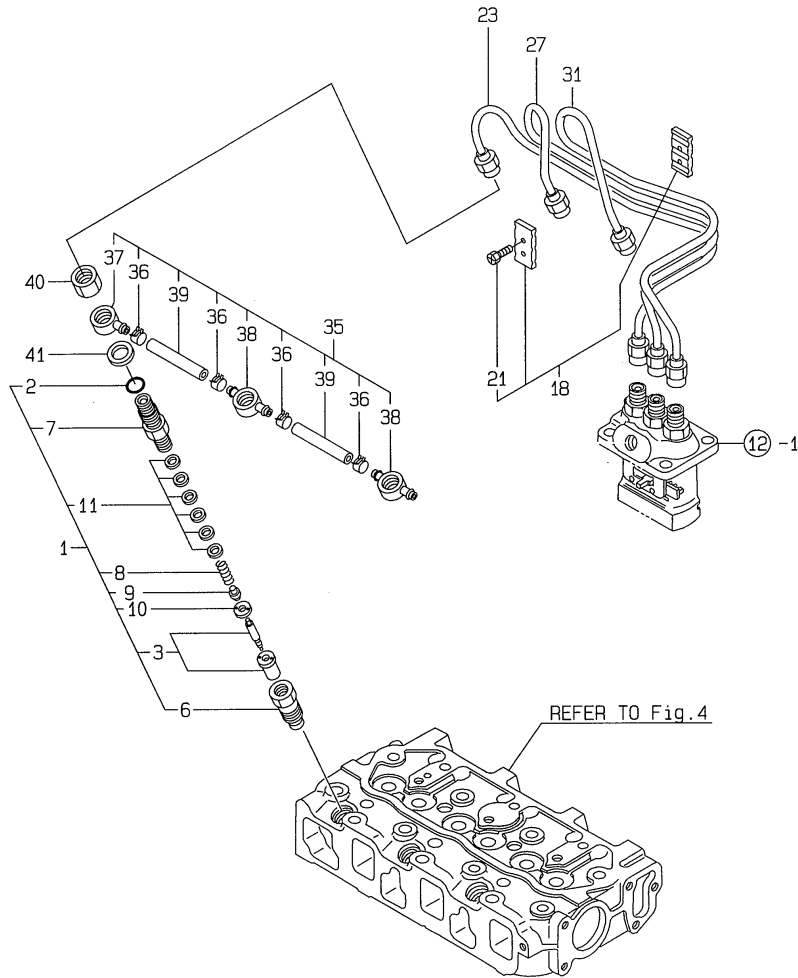
- (1) SELECTIVE PARTS: CERTAIN THE CLASSIFICATION MARK, THEN PLACE YOUR ORDER(REFER TO ILLUSTRATION)
- (2) REPAIR PART

Fig.14. FUEL INJECTION VALVE

OCR10-G45201 14. FUEL INJECTION VALVE

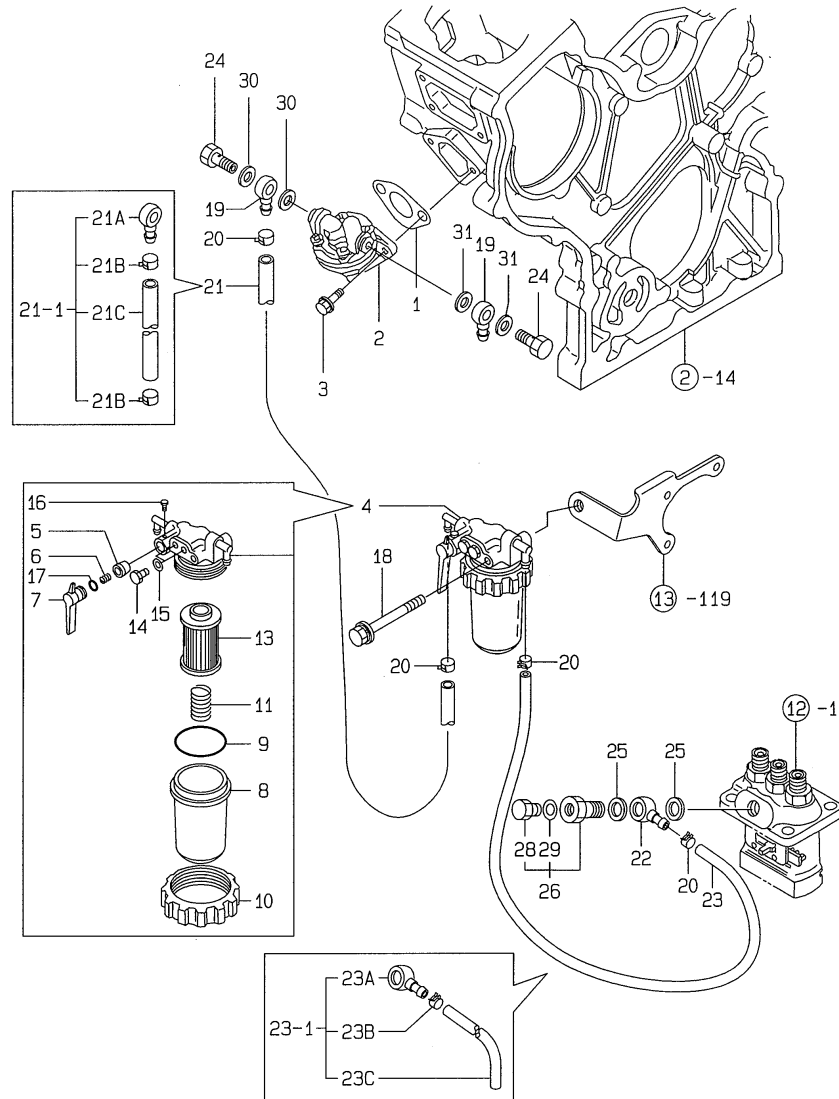
(A)=3TNE74-SA  
(B)=3TNE74-G1A  
(C)=3TNE74-G2A

(D)=3TNE74C-SA  
(E)=3TNE74C-G1A  
(F)=



REF.	LEV.	PARTS NO.	DESCRIPTION	Q'TY						I	R
				(A)	(B)	(C)	(D)	(E)	(F)		
1	1	719620-53700	VALVE ASSY, F.INJECT	3	3	3	3	3			
2	2	129155-51580	O-RING	3		3					
I	2-1	129155-61830	O-RING S10	3	3	3	3	3		N	
		(A=E13639)	(C=E18343)								
3	2	119620-53000	NOZZLE ASSY,F.INJECT	3	3	3	3	3			
6	2	119620-53080	NUT, VALVE W/CASE	3	3	3	3	3			
7	2	119620-53100	HOLDER, VALVE W/CASE	3	3	3	3	3			
8	2	119620-53120	SPRING, VALVE	3	3	3	3	3			
9	2	114250-53130	SEAT, NOZZLE SPRING	3	3	3	3	3			
10	2	119620-53140	SPACER, VALVE STOP	3	3	3	3	3			
11	2	114250-53400	SHIM PACK	3	3	3	3	3			
18	1	129150-59120	RETAINER, INJ. PIPE	1	1	1	1	1			
21	2	129150-59131	BOLT M4X14,HEX.SCKT.	2	2	2	2	2			
23	1	119620-59811	PIPE (1),FUEL INJECT	1	1	1	1	1			
27	1	119620-59821	PIPE (2),FUEL INJECT	1	1	1	1	1			
31	1	119620-59831	PIPE (3),FUEL INJECT	1	1	1	1	1			
35	1	119620-59540	PIPE ASSY, FUEL OVER	1	1	1	1	1			
36	2	124066-59100	CLAMP 8	4	4	4	4	4			
37	2	119260-59520	JOINT (B)	1	1	1	1	1			
38	2	119260-59530	JOINT (A)	2	2	2	2	2			
39	2	105025-59550	PIPE, FUEL RETURN	2	2	2	2	2			
40	1	119620-59700	NUT	3	3	3	3	3			
41	1	23414-140000	GASKET 14, ROUND	3	3	3	3	3			

Fig.15. FUEL FILTER

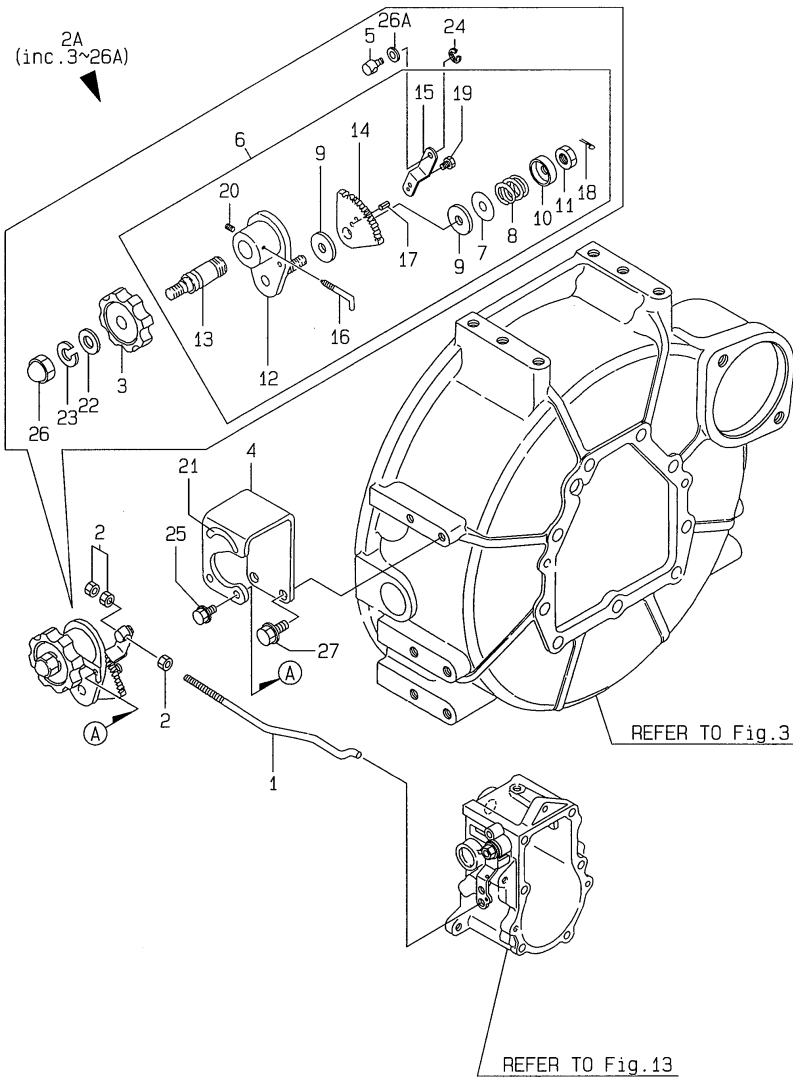


(A)=3TNE74-SA  
(B)=3TNE74-G1A  
(C)=3TNE74-G2A

(D)=3TNE74C-SA  
(E)=3TNE74C-G1A  
(F)=

REF.	LEV.	PARTS NO.	DESCRIPTION	Q'TY						I	R
				(A)	(B)	(C)	(D)	(E)	(F)		
1	1	121520-01851	GASKET, PUMP	1	1	1	1	1			
2	1	119600-52021	PUMP ASSY, FUEL FEED	1	1	1	1	1			
3	1	26106-060162	BOLT M 6X 16 PLATED	2	2	2	2	2			
4	1	171059-55600	STRAINER ASSY, FUEL	1	1	1	1	1			
5	2	104200-55321	VALVE, TAPER	1	1	1	1	1			
6	2	104200-55330	SPRING, TAPER VALVE	1	1	1	1	1			
7	2	104200-55341	HANDLE, COCK	1	1	1	1	1			
8	2	121254-55510	CUP, STRAINER	1	1	1	1	1			
9	2	102103-55520	O-RING	1	1	1	1	1			
10	2	110250-55610	RING, RETAINING	1	1	1	1	1			
11	2	121250-55620	SPRING	1	1	1	1	1			
13	2	124550-55700	ELEMENT	1	1	1	1	1			
14	2	101720-55750	PLUG 6	2	2	2	2	2			
15	2	23418-060000	GASKET 6, NYLON	2	2	2	2	2			
16	2	104200-55750	SCREW M 4	1	1	1	1	1			
17	2	24311-240100	O-RING 1A P-10A	1	1	1	1	1			
18	1	26014-080702	BOLT W/WASHER M8X 70	1	1	1	1	1			
19	1	104264-59030	JOINT 8, PIPE	2	2	2	2	2			
I	19-1	104264-59030	JOINT 8, PIPE	1	1	1	1	1		K	
		(A=E35430) (B=E36948) (C=E35429) (D=E00235) (E=E00216)									
20	1	124766-59050	CLAMP 12	4	4	4	4	4			
I	20-1	124766-59050	CLAMP 12	1	1	1	1	1		K	
		(A=E35430) (B=E36948) (C=E35429) (D=E00235) (E=E00216)									
21	1	121236-59080	PIPE,FUEL (D12XL400)	1	1	1	1	1			
I	21-1	119260-59020	PIPE,FUEL (D12XL400)	1	1	1	1	1		N	
		(A=E35430) (B=E36948) (C=E35429) (D=E00235) (E=E00216)									
I	21A	104264-59030	JOINT 8, PIPE	1	1	1	1	1		W	
		(A=E35430) (B=E36948) (C=E35429) (D=E00235) (E=E00216)									
I	21B	124766-59050	CLAMP 12	2	2	2	2	2		W	
		(A=E35430) (B=E36948) (C=E35429) (D=E00235) (E=E00216)									
I	21C	121236-59080	PIPE,FUEL (D12XL400)	1	1	1	1	1		W	
		(A=E35430) (B=E36948) (C=E35429) (D=E00235) (E=E00216)									
I	22	101304-59020	JOINT 12, PIPE	1	1	1	1	1		Z	
		(A=E35430) (B=E36948) (C=E35429) (D=E00235) (E=E00216)									
23	1	124160-59080	PIPE	1	1	1	1	1			
I	23-1	124160-59011	PIPE ASSY, FUEL OIL	1	1	1	1	1		N	
		(A=E35430) (B=E36948) (C=E35429) (D=E00235) (E=E00216)									
I	23A	101304-59020	JOINT 12, PIPE	1	1	1	1	1		W	
		(A=E35430) (B=E36948) (C=E35429) (D=E00235) (E=E00216)									
I	23B	124766-59050	CLAMP 12	1	1	1	1	1		W	
		(A=E35430) (B=E36948) (C=E35429) (D=E00235) (E=E00216)									
I	23C	124160-59080	PIPE	1	1	1	1	1		W	
		(A=E35430) (B=E36948) (C=E35429) (D=E00235) (E=E00216)									
24	1	105582-59150	BOLT, PIPE JOINT	2	2	2	2	2			
25	1	104200-59170	GASKET 12	2	2	2	2	2			
26	1	103854-59191	BOLT W/PLUG & SEAL	1	1	1	1	1			
28	2	124060-59380	PLUG	1	1	1	1	1			
29	2	22190-060002	SEAL WASHER 6S	1	1	1	1	1			
30	1	22190-080002	SEAL WASHER 8S	2	2	2	2	2			
31	1	22190-080002	SEAL WASHER 8S	2	2	2	2	2			

Fig.16. ENGINE CONTROL DEVICE



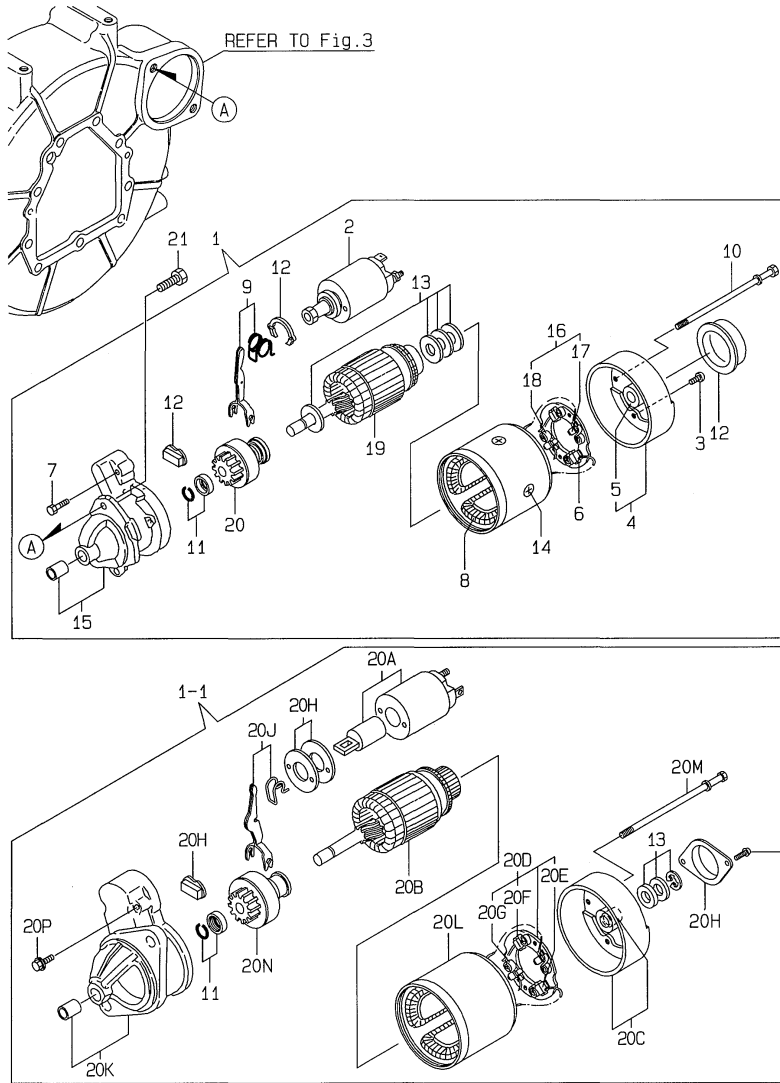
(A)=3TNE74-SA  
(B)=3TNE74-G1A  
(C)=3TNE74-G2A

(D)=3TNE74C-SA  
(E)=3TNE74C-G1A  
(F)=

REF.	LEV.	PARTS NO.	DESCRIPTION	QTY						I	R
				(A)	(B)	(C)	(D)	(E)	(F)		
1	1	119688-66120	LINK, ENGINE CONTROL	1	1	1	1	1			
2	1	26756-050002	LOCK NUT M 5 PLATED	3	3	3	3	3			
I 2A	1	119888-66160	CONTROL DEVICE	1	1	1	1	1		W	
		(A=E36809) (B=E36948) (C=E37628) (D=E00235) (E=E00234)									
I 3	2	126650-66020	HANDLE, REGULATOR	1	1	1	1	1			
I 4	2	119888-66110	BRACKET	1	1	1	1	1			
I 5	2	119888-66130	PIVOT	1	1	1	1	1			
I 6	2	171048-67010	REGULATOR ASSY	1	1	1	1	1			
I 7	3	171102-66080	SPACER	1	1	1	1	1			
I 8	3	104200-66820	SPRING	1	1	1	1	1			
I 9	3	104200-66830	PLATE, FRICTION	2	2	2	2	2			
I 10	3	104200-66850	WASHER (B)	1	1	1	1	1			
I 11	3	104200-66860	NUT	1	1	1	1	1			
I 12	3	171085-67100	BRACKET, GEAR	1	1	1	1	1			
I 13	3	171085-67110	SHAFT, DRIVING	1	1	1	1	1			
I 14	3	171085-67120	GEAR	1	1	1	1	1			
I 15	3	171048-67130	LEVER	1	1	1	1	1			
I 16	3	171048-67140	STOPPER	1	1	1	1	1			
I 17	3	22351-020006	SPRING PIN 2X 6	1	1	1	1	1			
I 18	3	22411-200150	COTTER PIN	1	1	1	1	1			
I 19	3	26116-060082	BOLT 6X8	1	1	1	1	1			
I 20	3	26921-050122	SCREW M 5X 12	1	1	1	1	1			
I 21	2	170064-67210	LABEL, HANDLE	1	1	1	1	1			
I 22	2	22117-100000	WASHER 10	1	1	1	1	1			
I 22-1	2	22137-100000	WASHER 10,POLISHED	1	1	1	1	1		N	
		(A=EXXX) (B=EXXX) (C=EXXX) (D=EXXX) (E=EXXX)									
I 23	2	22217-100000	SPRING WASHER 10	1	1	1	1	1			
I 24	2	22272-000050	CIRCLIP E- 5	1	1	1	1	1			
I 25	2	26106-060102	BOLT 6X 10 PLATED	2	2	2	2	2			
I 26	2	26657-100002	CAP NUT M10	1	1	1	1	1			
I 26A	2	22117-060000	WASHER 6	1	1	1	1	1		W	
		(A=EXXX) (B=EXXX) (C=EXXX) (D=EXXX) (E=EXXX)									
27	1	26106-080162	BOLT M 8X 16 PLATED	2	2	2	2	2			



Fig.17. STARTING MOTOR



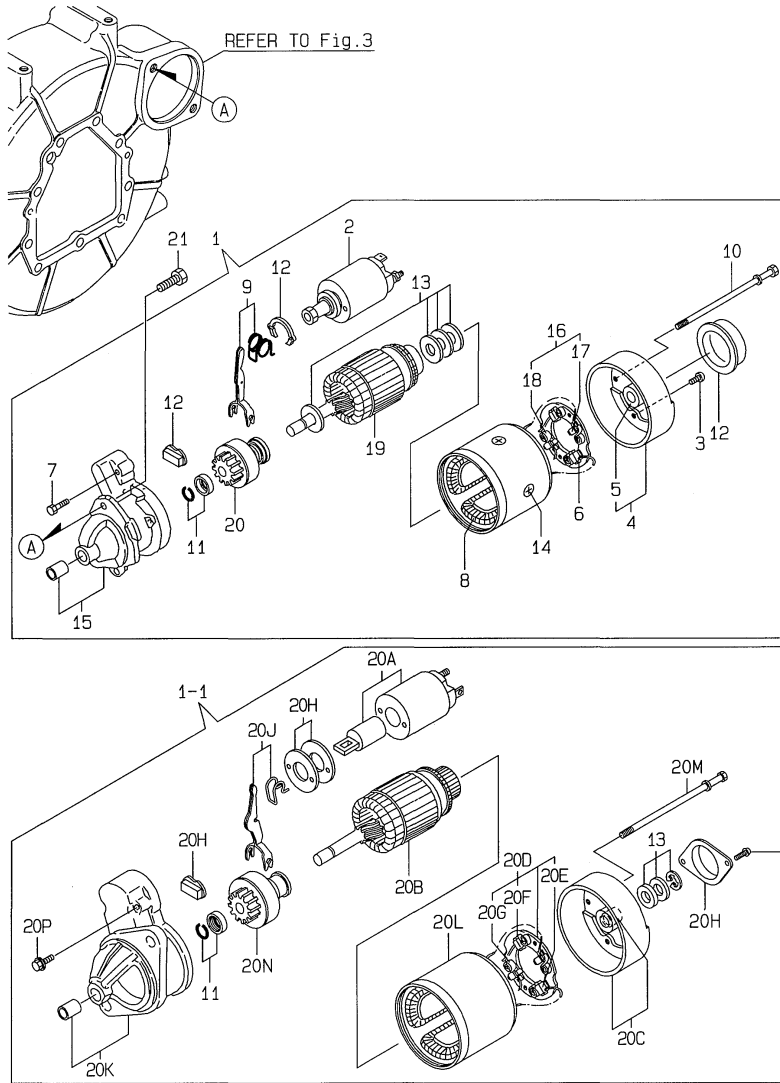
(A)=3TNE74-SA  
(B)=3TNE74-G1A  
(C)=3TNE74-G2A  
(D)=3TNE74C-SA  
(E)=3TNE74C-G1A  
(F)=

REF.	LEV.	PARTS NO.	DESCRIPTION	QTY						I	R
				(A)	(B)	(C)	(D)	(E)	(F)		
1	1	119631-77010	STARTER	1	1	1					
I 1-1	1	119631-77011	STARTING MOTOR	1	1	1	1	1			R
		(A=E18548) (B=E16864) (C=E18343)									
I 1-2	1	119255-77010	STARTER 12V-1.0W	1	1	1	1	1			N 1
		(A=E26589) (B=E31094) (C=E26997) (D=E00190) (E=E00179)									
I 2	2	X2114275070	SWITCH, MAGNETIC	1	1	1					Z
		(A=E18548) (B=E16864) (C=E18343)									
I 3	2	X2114283500	SCREW SET	1	1	1					Z
		(A=E18548) (B=E16864) (C=E18343)									
I 4	2	X2114430010	COVER ASSY, REAR	1	1	1					Z
		(A=E18548) (B=E16864) (C=E18343)									
I 5	3	X2114535200	METAL, STARTER	1	1	1					Z
		(A=E18548) (B=E16864) (C=E18343)									
I 6	2	X2114531200	BRUSH (+)	2	2	2					Z
		(A=E18548) (B=E16864) (C=E18343)									
I 7	2	X2114586700	BOLT M6X 37	2	2	2					Z
		(A=E18548) (B=E16864) (C=E18343)									
I 8	2	X2114631090	COIL ASSY, FIELD	1	1	1					Z
		(A=E18548) (B=E16864) (C=E18343)									
I 9	2	X2114660130	LEVER KIT, SHIFT	1	1	1					Z
		(A=E18548) (B=E16864) (C=E18343)									
I 10	2	X2114680050	BOLT, THROUGH	2	2	2					Z
		(A=E18548) (B=E16864) (C=E18343)									
I 11	2	X2114715500	STOPPER SET, PINION	1	1	1	1	1			
		(A=E18548) (B=E16864) (C=E18343)									
I 12	2	X2114780060	COVER ASSY, DUST	1	1	1					Z
		(A=E18548) (B=E16864) (C=E18343)									
I 13	2	X2114811000	WASHER KIT, THRUST	1	1	1	1	1			
		(A=E18548) (B=E16864) (C=E18343)									
I 14	2	X2114821500	SCREW SET	1	1	1					Z
		(A=E18548) (B=E16864) (C=E18343)									
I 15	2	X2114966130	CASE ASSY, GEAR	1	1	1					Z
		(A=E18548) (B=E16864) (C=E18343)									
I 16	2	X2114990010	HOLDER ASSY, BRUSH	1	1	1					Z
		(A=E18548) (B=E16864) (C=E18343)									
I 17	3	X2114831300	BRUSH (-)	1	1	1					Z
		(A=E18548) (B=E16864) (C=E18343)									
I 18	3	X2114931400	SPRING, BRUSH	3	3	3					Z
		(A=E18548) (B=E16864) (C=E18343)									
I 19	2	124190-77110	ARMATURE ASSY	1	1	1					Z
		(A=E18548) (B=E16864) (C=E18343)									
I 20	2	124190-77760	PINION ASSY	1	1	1					Z
		(A=E18548) (B=E16864) (C=E18343)									
I 20A	2	124298-77020	SWITCH, MAGNET	1	1	1	1	1			W
		(A=E18548) (B=E16864) (C=E18343)									
I 20A-1	2	124298-77020	SWITCH, MAGNET	1	1	1	1	1			Z
		(A=E26589) (B=E31094) (C=E26997) (D=E00190) (E=E00179)									
I 20B	2	114371-77110	ARMATURE	1	1	1	1	1			W
		(A=E18548) (B=E16864) (C=E18343)									
I 20B-1	2	114371-77110	ARMATURE	1	1	1	1	1			Z
		(A=E26589) (B=E31094) (C=E26997) (D=E00190) (E=E00179)									
I 20C	2	114371-77140	COVER ASSY, REAR	1	1	1	1	1			W
		(A=E18548) (B=E16864) (C=E18343)									

Remarks  
(1) REFER IS FIG NO.21

N:Old  $\xrightarrow{\text{Yes}}$  New, Q:Old  $\xrightarrow{\text{No}}$  New, R:Old  $\xrightarrow{\text{Yes}}$  New, S:Old  $\xrightarrow{\text{No}}$  New, W:Add, Z:Discontinued, F:Interchangeable by set, K:Q'ty Change  
 ++ CONTINUE ++  
 (C)Copy Rights YANMAR CO.,LTD.

Fig.17. STARTING MOTOR



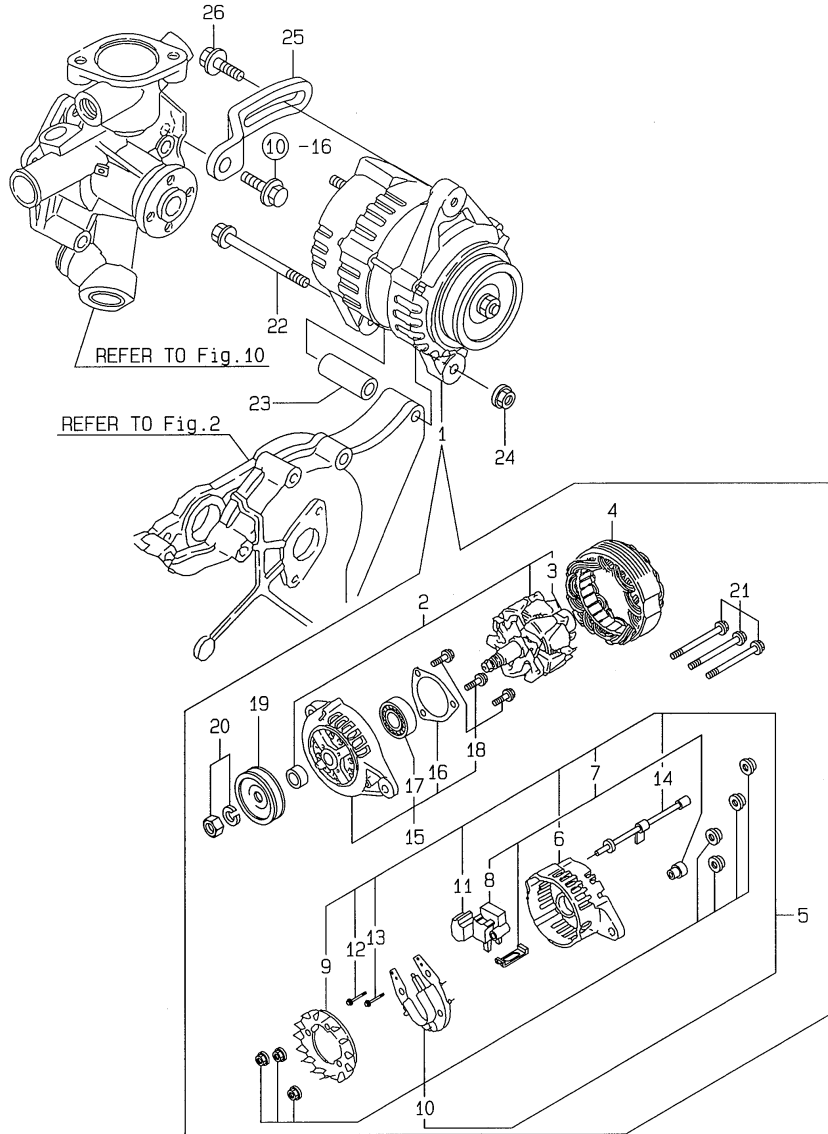
(A)=3TNE74-SA  
(B)=3TNE74-G1A  
(C)=3TNE74-G2A

(D)=3TNE74C-SA  
(E)=3TNE74C-G1A  
(F)=

REF.	LEV.	PARTS NO.	DESCRIPTION	Q'TY						I	R
				(A)	(B)	(C)	(D)	(E)	(F)		
I	20C-1	2 114371-77140	COVER ASSY, REAR (A=E26589) (B=E31094) (C=E26997) (D=E00190)	1	1	1	1	1	1		Z
I	20D	2 114371-77160	HOLDER ASSY, BRUSH (A=E18548) (B=E16864) (C=E18343)	1	1	1	1	1	1		W
I	20D-1	2 114371-77160	HOLDER ASSY, BRUSH (A=E26589) (B=E31094) (C=E26997) (D=E00190)	1	1	1	1	1	1		Z
I	20E	3 114371-79040	BRUSH (-) (A=E18548) (B=E16864) (C=E18343)	2	2	2	2	2	2		W
I	20E-1	3 114371-79040	BRUSH (-) (A=E26589) (B=E31094) (C=E26997) (D=E00190)	2	2	2	2	2	2		Z
I	20F	3 114371-79050	BRUSH (+) (A=E18548) (B=E16864) (C=E18343)	1	1	1	1	1	1		W
I	20F-1	3 114371-79050	BRUSH (+) (A=E26589) (B=E31094) (C=E26997) (D=E00190)	1	1	1	1	1	1		Z
I	20G	3 114371-79060	SPRING, BRUSH (A=E18548) (B=E16864) (C=E18343)	4	4	4	4	4	4		W
I	20G-1	3 114371-79060	SPRING, BRUSH (A=E26589) (B=E31094) (C=E26997) (D=E00190)	4	4	4	4	4	4		Z
I	20H	2 114371-77170	COVER KIT, DUST (A=E18548) (B=E16864) (C=E18343)	1	1	1	1	1	1		W
I	20H-1	2 114371-77170	COVER KIT, DUST (A=E26589) (B=E31094) (C=E26997) (D=E00190)	1	1	1	1	1	1		Z
I	20J	2 114371-77180	SHIFT LEVER KIT (A=E18548) (B=E16864) (C=E18343)	1	1	1	1	1	1		W
I	20J-1	2 114371-77180	SHIFT LEVER KIT (A=E26589) (B=E31094) (C=E26997) (D=E00190)	1	1	1	1	1	1		Z
I	20K	2 119631-77651	CASE, GEAR (A=E18548) (B=E16864) (C=E18343)	1	1	1	1	1	1		W
I	20K-1	2 119631-77651	CASE, GEAR (A=E26589) (B=E31094) (C=E26997) (D=E00190)	1	1	1	1	1	1		Z
I	20L	2 124097-77710	YOKE ASSY. (A=E18548) (B=E16864) (C=E18343)	1	1	1	1	1	1		W
I	20L-1	2 124097-77710	YOKE ASSY. (A=E26589) (B=E31094) (C=E26997) (D=E00190)	1	1	1	1	1	1		Z
I	20M	2 124195-77770	THROUGH BOLT (A=E18548) (B=E16864) (C=E18343)	2	2	2	2	2	2		W
I	20M-1	2 124195-77770	THROUGH BOLT (A=E26589) (B=E31094) (C=E26997) (D=E00190)	2	2	2	2	2	2		Z
I	20N	2 119631-77780	PINION CMP (A=E18548) (B=E16864) (C=E18343)	1	1	1	1	1	1		W
I	20N-1	2 119631-77780	PINION CMP (A=E26589) (B=E31094) (C=E26997) (D=E00190)	1	1	1	1	1	1		Z
I	20P	2 114371-79070	BOLT M 6X 37 (A=E18548) (B=E16864) (C=E18343)	2	2	2	2	2	2		W
I	20P-1	2 114371-79070	BOLT M 6X 37 (A=E26589) (B=E31094) (C=E26997) (D=E00190)	2	2	2	2	2	2		Z
	21	1 26116-120252	BOLT M12X 25 PLATED	2	2	2	2	2	2		

Remarks  
(1) REFER IS FIG NO.21

Fig.18. GENERATOR

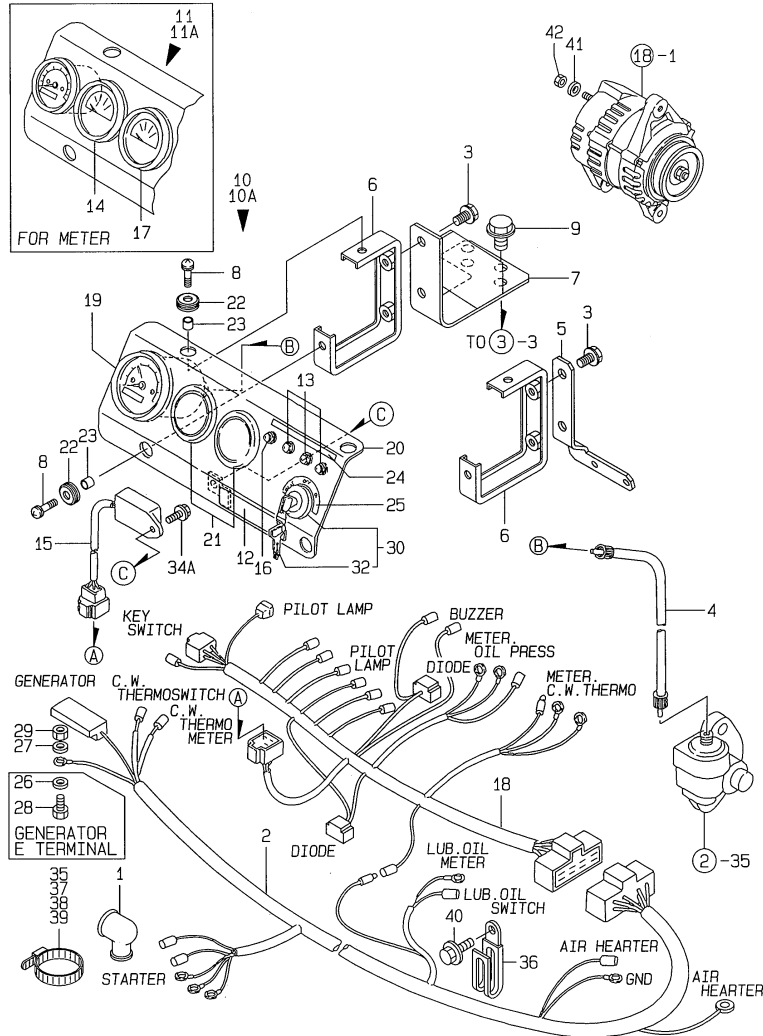


(A)=3TNE74-SA  
(B)=3TNE74-G1A  
(C)=3TNE74-G2A

(D)=3TNE74C-SA  
(E)=3TNE74C-G1A  
(F)=

REF.	LEV.	PARTS NO.	DESCRIPTION	QTY						I	R
				(A)	(B)	(C)	(D)	(E)	(F)		
1	1	119836-77200	GENERATOR	1	1	1	1	1			
2	2	119836-77700	ROTOR ASSY	1	1	1	1	1			
3	3	119836-77850	BALL BEARING	1	1	1	1	1			
4	2	119836-77710	STATOR ASSY	1	1	1	1	1			
5	2	119836-77721	COVER ASSY, REAR	1	1	1	1	1			
6	3	119836-77730	COVER, REAR	1	1	1	1	1			
7	3	119836-77741	BRUSH ASSY,REGULATOR	1	1	1	1	1			
8	4	119836-77750	BRUSH ASSY	1	1	1	1	1			
9	3	119836-77760	GUIDE, FAN SIDE	1	1	1	1	1			
10	3	119836-77770	DIODE ASSY	1	1	1	1	1			
11	3	119836-77780	CONDENSER	1	1	1	1	1			
12	3	119836-77871	BOLT (1)	1	1	1	1	1			
13	3	119836-77880	BOLT (2)	1	1	1	1	1			
14	3	119836-77890	WIRE ASSY, LEAD	1	1	1	1	1			
15	2	119836-77790	COVER ASSY, FRONT	1	1	1	1	1			
16	3	119836-77800	RETAINER, BEARING	1	1	1	1	1			
17	3	119836-77840	BALL BEARING	1	1	1	1	1			
18	3	119836-77860	SCREW KID	1	1	1	1	1			
19	2	119836-77810	PULLEY	1	1	1	1	1			
20	2	119836-77820	NUT ASSY, PULLEY	1	1	1	1	1			
21	2	119836-77830	BOLT, THROUGH	1	1	1	1	1			
22	1	26106-081052	BOLT M 8X105 PLATED	1	1	1	1	1			
23	1	119621-77340	SPACER	1	1	1	1	1			
24	1	26366-080002	NUT M 8	1	1	1	1	1			
25	1	119621-77331	ADJUSTER, BELT	1	1	1	1	1			
26	1	26106-080182	BOLT M 8X 18 PLATED	1	1	1	1	1			

Fig.19. PANEL



Remarks  
 (1) WITH C.W.THERMOMETER(REF.NO.14,  
 P/# 171010-77850) & PRESSURE  
 GAUGE(REF.NO.17,P/# 171090-91010).

(A)=3TNE74-SA (D)=3TNE74C-SA  
 (B)=3TNE74-G1A (E)=3TNE74C-G1A  
 (C)=3TNE74-G2A (F)=

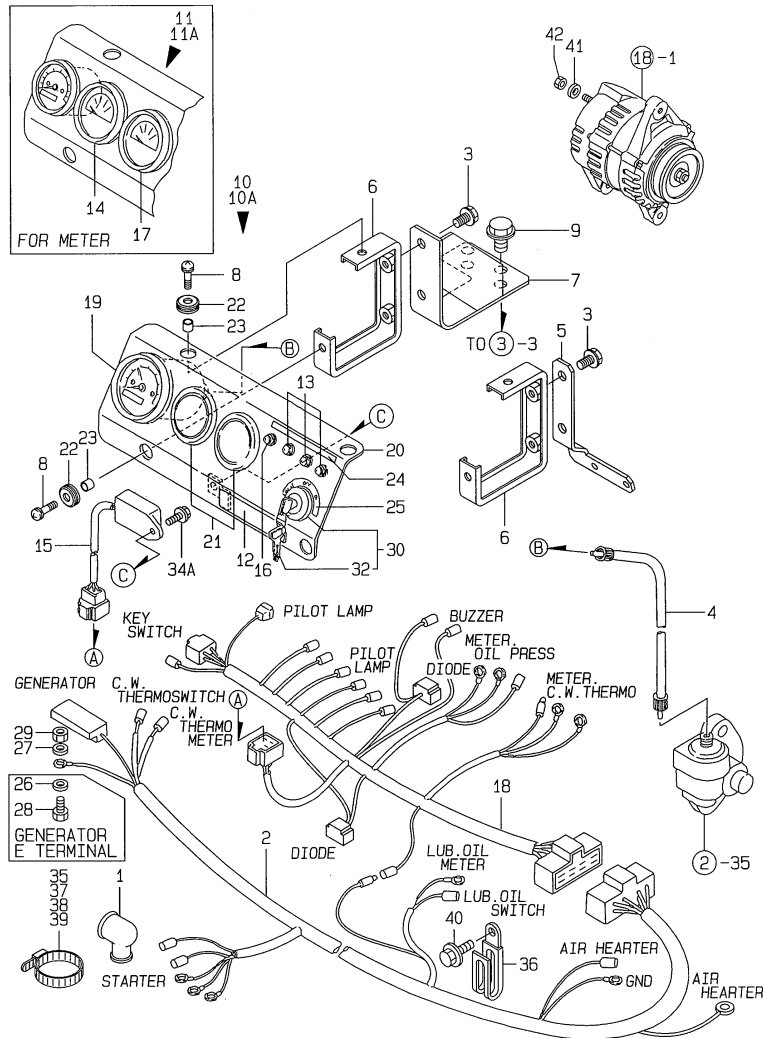
REF.	LEV.	PARTS NO.	DESCRIPTION	QTY						I	R
				(A)	(B)	(C)	(D)	(E)	(F)		
1	1	124550-77030	COVER, TERMINAL	1	1	1	1	1			
2	1	119888-91021	HARNESS (A), WIRE	1		1					
I 2-1	1	119888-91022	HARNESS(A), WIRE	1	1	1	1	1			N
		(A=E14387) (C=E18343)									
3	1	26106-080122	BOLT M 8X 12 PLATED	4	4	4	4	4			
4	1	124701-91140	CABLE L= 985	1	1	1	1	1			
5	1	119288-91140	SUPPORT	1	1	1	1	1			
6	1	119888-91120	SUPPORT, PANEL	2	2	2	2	2			
7	1	119288-91130	BRACKET	1	1	1	1	1			
8	1	26033-060202	SCREW M 6X 20	4	4	4	4	4			
9	1	26106-100502	BOLT M10X 50 PLATED	2	2	2	2	2			
10	1	119888-91101	PANEL ASSY, INSTRUM	1		1	1				
I 10A	1	119888-91301	PANEL ASSY, INSTRUM		1			1			
11	1	119888-91201	PANEL ASSY, INSTRUM	1		1	1				1
I 11A	1	119888-91311	PANEL ASSY, INSTRUM		1			1			1
12	2	104507-07190	LABEL, YANMAR	1	1	1	1	1			
13	2	124732-77720	LAMP, CHARGING	3	3	3	3	3			
14	2	171010-77850	THERMOMETER, C.W.	1	1	1	1	1			1
15	2	128300-77920	TIMER	1	1	1	1	1			
16	2	124559-77971	LAMP, PILOT	1	1	1	1	1			
17	2	171090-91010	GAUGE, PRESSURE	1	1	1	1	1			1
18	2	119888-91031	HARNESS (B), WIRE	1	1	1	1	1			
19	2	171080-91100	TACHOMETER	1	1	1	1	1			
20	2	119888-91110	BODY	1	1	1	1	1			
21	2	124770-91220	COVER, BLIND	2	2	2	2	2			
22	2	121400-91520	ABSORBER	4	4	4	4	4			
23	2	121400-91530	SPACER	4	4	4	4	4			
24	2	119888-91610	LABEL, CW & OIL LAMP	1	1	1	1	1			
25	2	119888-91620	LABEL, KEY SWITCH	1	1	1	1	1			
I 26	2	22117-050000	WASHER 5	1	1	1					Z
		(A=E14387) (B=E14387) (C=E14387)									
I 27	2	22117-050000	WASHER 5	1	1	1					Z
		(A=E14387) (B=E14387) (C=E14387)									
I 28	2	26116-050102	BOLT M 5X 10 PLATED	1	1	1					Z
		(A=E14387) (B=E14387) (C=E14387)									
I 29	2	26716-050002	NUT M 5	1	1	1					Z
		(A=E14387) (B=E14387) (C=E14387)									
30	2	933110-00100	SWITCH ASSY, STARTER	1	1	1	1	1			
32	3	933110-00301	KEY ASSY	1	1	1	1	1			
I 34A	2	26106-060102	BOLT 6X 10 PLATED	1	1	1	1	1			W
		(A=E14387) (B=E14387) (C=E14387)									
35	1	121750-59890	CLAMP 140	1	1	1	1	1			
36	1	194180-51640	CLAMP, WIRE HARNESS	1	1	1	1	1			
37	1	121750-59890	CLAMP 140			1					
38	1	121750-59890	CLAMP 140	1	1		1	1			
39	1	121750-59890	CLAMP 140	1	1		1	1			
I 40	1	26106-100122	BOLT M10X 12 PLATED	1	1	1	1	1			W
		(A=E14387) (B=E14387) (C=E14387) (D=E14387) (E=E14387)									
I 41	1	22117-050000	WASHER 5	1	1	1	1	1			W
		(A=E14387) (B=E14387) (C=E14387)									
I 42	1	26716-050002	NUT M 5	1	1	1	1	1			W

Fig.19. PANEL

(A)=3TNE74-SA  
(B)=3TNE74-G1A  
(C)=3TNE74-G2A

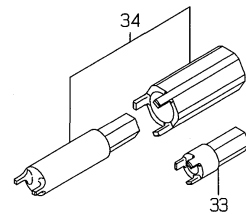
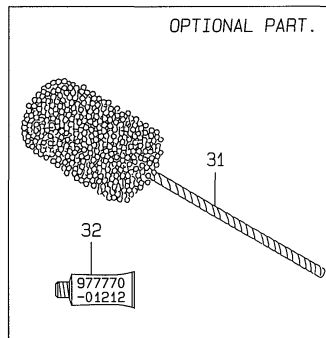
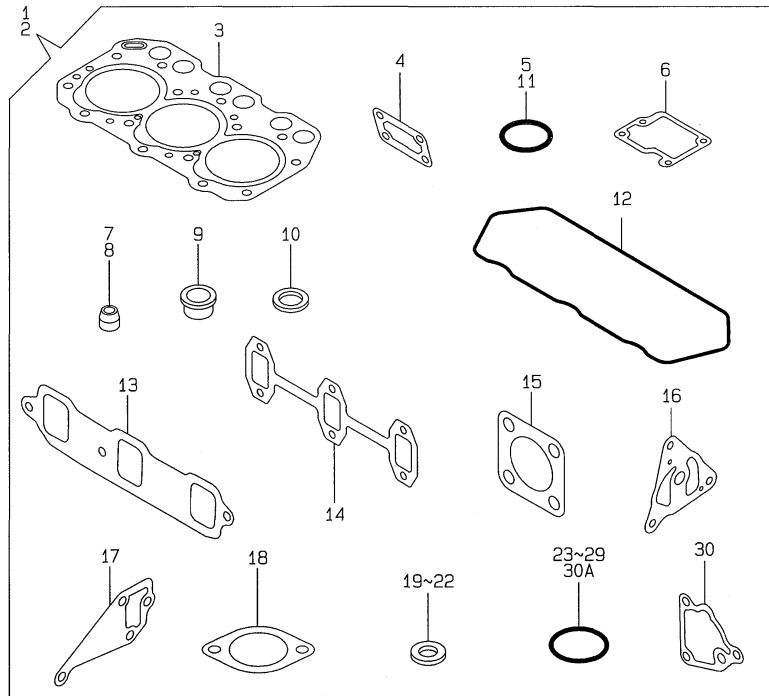
(D)=3TNE74C-SA  
(E)=3TNE74C-G1A  
(F)=

REF.	LEV.	PARTS NO.	DESCRIPTION	QTY						I	R	
				(A)	(B)	(C)	(D)	(E)	(F)			
(A=EXXX)		(B=EXXX)	(C=EXXX)									



Remarks  
(1) WITH C.W.THERMOMETER(REF.NO.14,  
P/# 171010-77850) & PRESSURE  
GAUGE(REF.NO.17,P/# 171090-91010).

Fig.20. GASKET SET



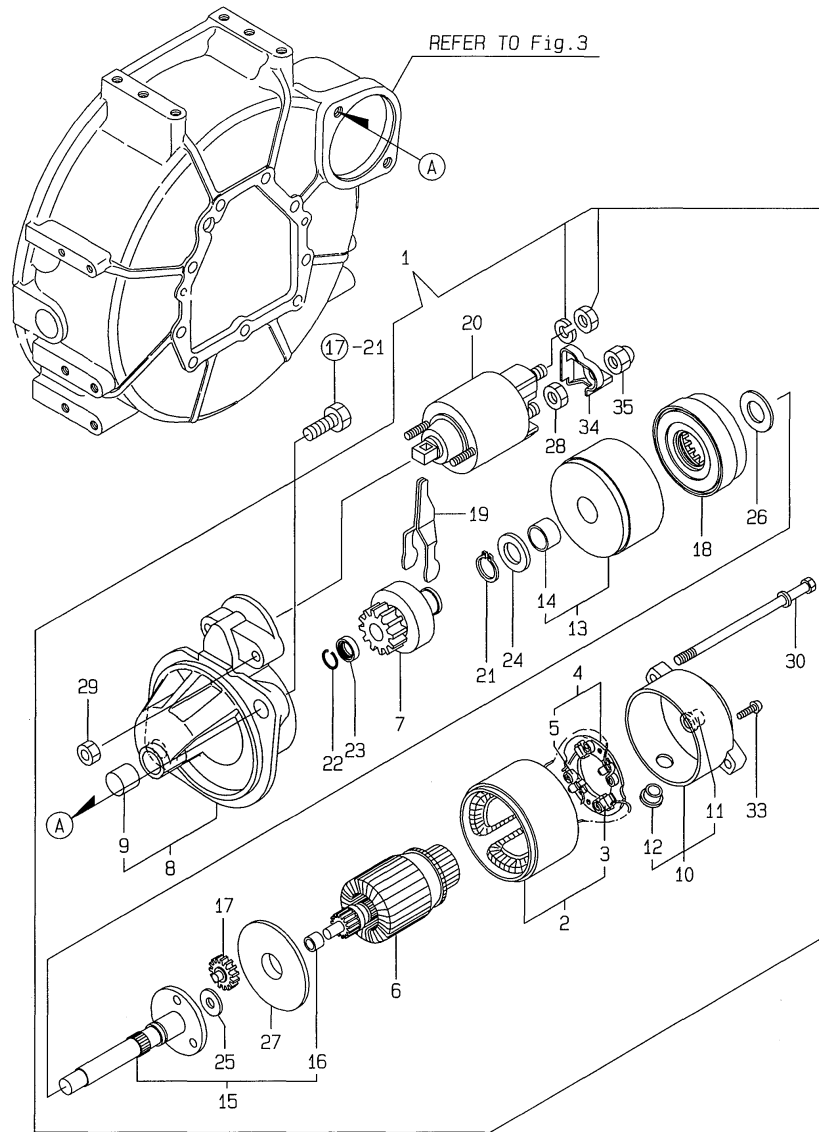
(A)=3TNE74-SA  
(B)=3TNE74-G1A  
(C)=3TNE74-G2A

(D)=3TNE74C-SA  
(E)=3TNE74C-G1A  
(F)=

REF.	LEV.	PARTS NO.	DESCRIPTION	Q'TY						I	R
				(A)	(B)	(C)	(D)	(E)	(F)		
1	1	719623-92610	GASKET SET(NON-ASB.)	1	1		1	1			1
2	1	719623-92620	GASKET SET(NON-ASB.)				1				1
3	2	119623-01330	GASKET, CYL. HEAD	1	1	1	1	1			
4	2	119660-01562	GASKET, COVER	1	1	1	1	1			
5	2	24311-000320	O-RING 1A P-32.0	1	1	1	1	1			
6	2	119620-03031	GASKET, PLATE	1	1	1	1	1			
7	2	124950-11340	SEAL, VALVE STEM(EXH)	3	3	3	3	3			
8	2	124160-11340	SEAL, VALVE STEM(INT)	3	3	3	3	3			
9	2	119600-11450	PROTECTOR, NOZZLE	3	3	3	3	3			
10	2	119600-11460	GASKET, NOZZLE	6	6	6	6	6			
11	2	24311-000320	O-RING 1A P-32.0	1		1					
12	2	119620-11310	GASKET, BONNET	1	1	1	1	1			
13	2	119660-12111	GASKET, SUC.MANIFOLD	1	1	1	1	1			
14	2	119620-13110	GASKET, EXH.MANIFOLD	1	1	1	1	1			
15	2	121000-13201	GASKET, SILENCER	2	2	2	2	2			
16	2	119660-32020	GASKET, L.O.PUMP	1	1	1	1	1			
17	2	119620-42020	GASKET, PUMP	1	1	1	1	1			
18	2	129350-49541	GASKET, COVER	1	1	1	1	1			
19	2	124465-44950	GASKET 16	2	2	2	2	2			
20	2	104200-59170	GASKET 12	2	2	2	2	2			
21	2	23414-140000	GASKET 14, ROUND	3	3	3	3	3			
22	2	22190-080002	SEAL WASHER 8S	4	4	4	4	4			
23	2	24311-000120	O-RING 1A P 12.0	4	4	4	4	4			
I 23-1	2	24311-000120	O-RING 1A P 12.0	2	2	2	2	2			K
24	2	(A=E61629) 129155-51580	O-RING	3		3					
I 24-1	1	(B=E61596) 129155-61830	O-RING S10	3	3	3	3	3			N
25	2	(A=E13639) 24341-000240	O-RING 1A S-24.0	1	1	1	1	1			
26	2	(C=E18343) 24311-000160	O-RING 1A P-16.0	1	1	1	1	1			
27	2	24311-000120	O-RING 1A P 12.0	1	1	1	1	1			
I 27-1	2	24311-000110	O-RING 1A P-11.0	1	1	1	1	1			R
I 27-2	2	(A=E25948) 119209-35030	O-RING	1	1	1	1	1			R
28	2	(B=E31094) 24321-000600	O-RING 1A G-60.0					1			
29	2	(C=E25947) 24321-000700	O-RING 1A G70.0,NBR					1			
30	2	(D=E00190) 119660-35113	GASKET, BRACKET	1	1	1	1	1			
I 30A	2	(E=E00169) 119624-32040	O-RING P 12.0	2	2	2	2	2			W
31	1	(A=E61629) 129400-92410	FLEX HORN	1	1	1	1	1			1
32	1	(B=E61596) 977770-01212	GASKET, LIQUID	1	1	1	1	1			1
I 33	1	(C=E61671) 119621-99100	TOOL,CARB HIGH IDLE					1	1		
I 34	1	(D=E00240) 119621-99400	TOOL ASSY,CARB FUEL					1	1		

Remarks  
(1) OPTIONAL PART.

Fig.21. STARTING MOTOR(INNER PARTS)

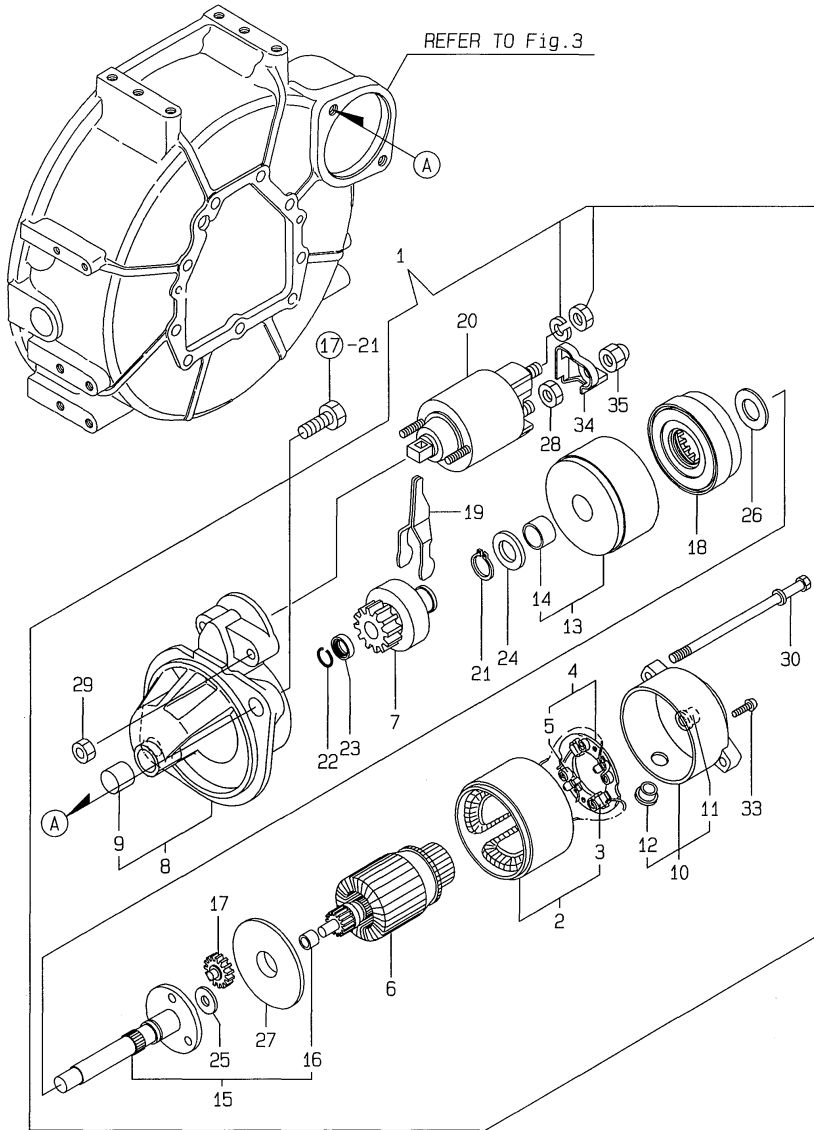


(A)=3TNE74-SA  
(B)=3TNE74-G1A  
(C)=3TNE74-G2A

(D)=3TNE74C-SA  
(E)=3TNE74C-G1A  
(F)=

REF.	LEV.	PARTS NO.	DESCRIPTION	Q'TY						I	R
				(A)	(B)	(C)	(D)	(E)	(F)		
I	1	1 119255-77010 (A=E26589) (B=E31094) (C=E26997) (D=E00190)	STARTER 12V-1.0W	1	1	1	1	1	1	W	
I	2	2 X0281007680 (A=E26589) (B=E31094) (C=E26997) (D=E00190)	COIL ASSY, FIELD	1	1	1	1	1	1	W	
I	3	3 X0280996180 (A=E26589) (B=E31094) (C=E26997) (D=E00190)	STARTER KIT	2	2	2	2	2	2	W	
I	4	2 X0285105190 (A=E26589) (B=E31094) (C=E26997) (D=E00190)	HOLDER ASSY.	1	1	1	1	1	1	W	
I	5	3 X0285205030 (A=E26589) (B=E31094) (C=E26997) (D=E00190)	SPRING	4	4	4	4	4	4	W	
I	6	2 X0282005871 (A=E26589) (B=E31094) (C=E26997) (D=E00190)	ARMATURE ASSY	1	1	1	1	1	1	W	
I	7	2 X0283006960 (A=E26589) (B=E31094) (C=E26997) (D=E00190)	CLUTCH SUB-ASSY.	1	1	1	1	1	1	W	
I	8	2 X2284005750 (A=E26589) (B=E31094) (C=E26997) (D=E00190)	HOUSING ASSY	1	1	1	1	1	1	W	
I	9	3 X9491050100 (A=E26589) (B=E31094) (C=E26997) (D=E00190)	NEEDLE BEARING	1	1	1	1	1	1	W	
I	10	2 X0285005770 (A=E26589) (B=E31094) (C=E26997) (D=E00190)	FRAME ASSY.	1	1	1	1	1	1	W	
I	11	3 X9491040990 (A=E26589) (B=E31094) (C=E26997) (D=E00190)	BEARING	1	1	1	1	1	1	W	
I	12	3 X0280626010 (A=E26589) (B=E31094) (C=E26997) (D=E00190)	COVER	1	1	1	1	1	1	W	
I	13	2 X0284105010 (A=E26589) (B=E31094) (C=E26997) (D=E00190)	BEARING SUB-ASSY.	1	1	1	1	1	1	W	
I	14	3 X9491034330 (A=E26589) (B=E31094) (C=E26997) (D=E00190)	BEARING	1	1	1	1	1	1	W	
I	15	2 X0286105010 (A=E26589) (B=E31094) (C=E26997) (D=E00190)	SHAFT SUB-ASSY.	1	1	1	1	1	1	W	
I	16	3 X9491034320 (A=E26589) (B=E31094) (C=E26997) (D=E00190)	BEARING	1	1	1	1	1	1	W	
I	17	2 X0286305010 (A=E26589) (B=E31094) (C=E26997) (D=E00190)	GEAR	3	3	3	3	3	3	W	
I	18	2 X0286355010 (A=E26589) (B=E31094) (C=E26997) (D=E00190)	GEAR	1	1	1	1	1	1	W	
I	19	2 X0287405140 (A=E26589) (B=E31094) (C=E26997) (D=E00190)	LEVER	1	1	1	1	1	1	W	
I	20	2 X0534007800 (A=E26589) (B=E31094) (C=E26997) (D=E00190)	SWITCH,EMERGENCY	1	1	1	1	1	1	W	
I	21	2 X9055715000 (A=E26589) (B=E31094) (C=E26997) (D=E00190)	RING	1	1	1	1	1	1	W	
I	22	2 X9490721360 (A=E26589) (B=E31094) (C=E26997) (D=E00190)	RING	1	1	1	1	1	1	W	
I	23	2 X0280210331 (A=E26589) (B=E31094) (C=E26997) (D=E00190)	NUT	1	1	1	1	1	1	W	
I	24	2 X9490138110 (A=E26589) (B=E31094) (C=E26997) (D=E00190)	WASHER	1	1	1	1	1	1	W	
I	25	2 X9490138090 (A=E26589) (B=E31094) (C=E26997) (D=E00190)	WASHER	1	1	1	1	1	1	W	
I	26	2 X9490138100 (A=E26589) (B=E31094) (C=E26997) (D=E00190)	WASHER	1	1	1	1	1	1	W	

Fig.21. STARTING MOTOR(INNER PARTS)



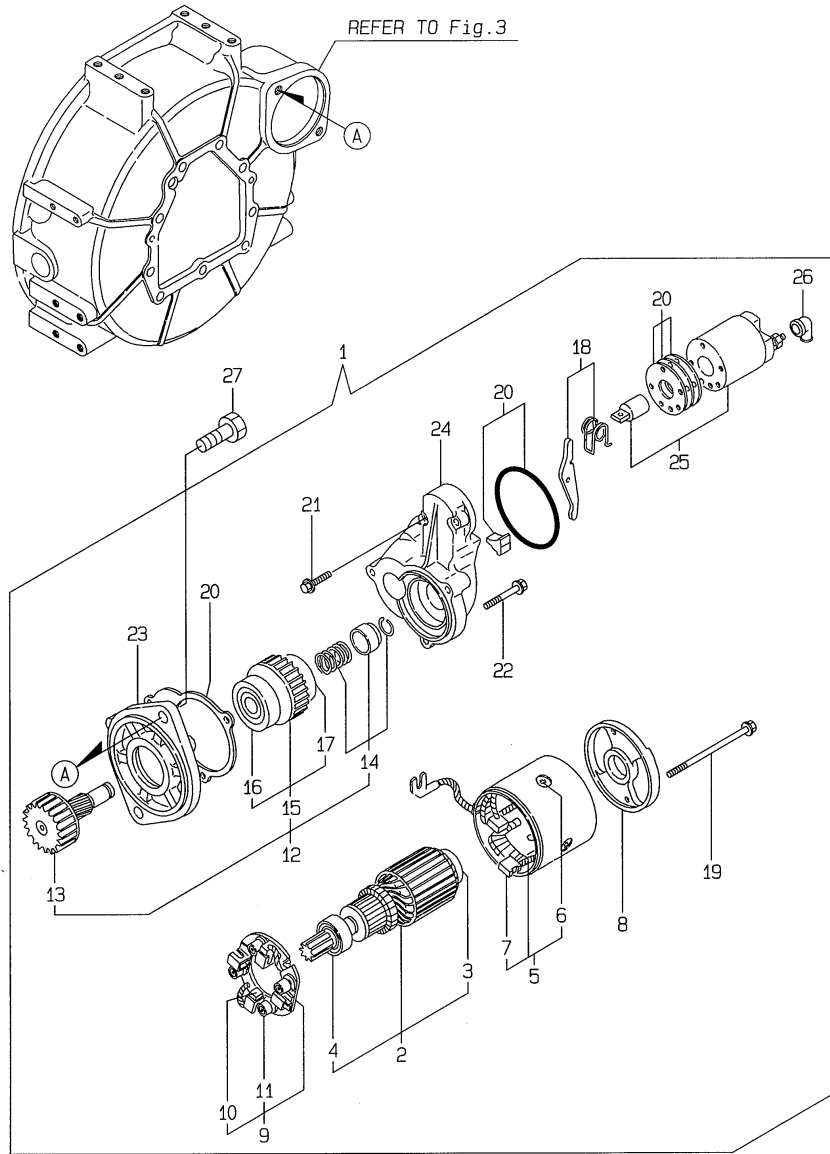
(A)=3TNE74-SA  
(B)=3TNE74-G1A  
(C)=3TNE74-G2A

(D)=3TNE74C-SA  
(E)=3TNE74C-G1A  
(F)=

REF.	LEV.	PARTS NO.	DESCRIPTION	Q'TY						I	R
				(A)	(B)	(C)	(D)	(E)	(F)		
I	27	(A=E26589) (B=E31094) X0284525010	(C=E26997) (D=E00190) PLATE	(E=E00179)	1	1	1	1	1		W
I	28	(A=E26589) (B=E31094) X9490562360	(C=E26997) (D=E00190) NUT	(E=E00179)	1	1	1	1	1		W
I	29	(A=E26589) (B=E31094) X9490560750	(C=E26997) (D=E00190) NUT	(E=E00179)	2	2	2	2	2		W
I	30	(A=E26589) (B=E31094) X9490423520	(C=E26997) (D=E00190) BOLT, THROUGH	(E=E00179)	2	2	2	2	2		W
I	33	(A=E26589) (B=E31094) X9490065670	(C=E26997) (D=E00190) SCREW M 4X 6 (BS)	(E=E00179)	2	2	2	2	2		W
I	34	(A=E26589) (B=E31094) X0280335360	(C=E26997) (D=E00190) COVER SET, TERMINAL	(E=E00179)	1	1	1	1	1		W
I	35	(A=E26589) (B=E31094) X1289510130	(C=E26997) (D=E00190) NUT	(E=E00179)	1	1	1	1	1		W



Fig.22. STARTING MOTOR(COLD DISTRICT)



(A)=3TNE74-SA  
(B)=3TNE74-G1A  
(C)=3TNE74-G2A

(D)=3TNE74C-SA  
(E)=3TNE74C-G1A  
(F)=

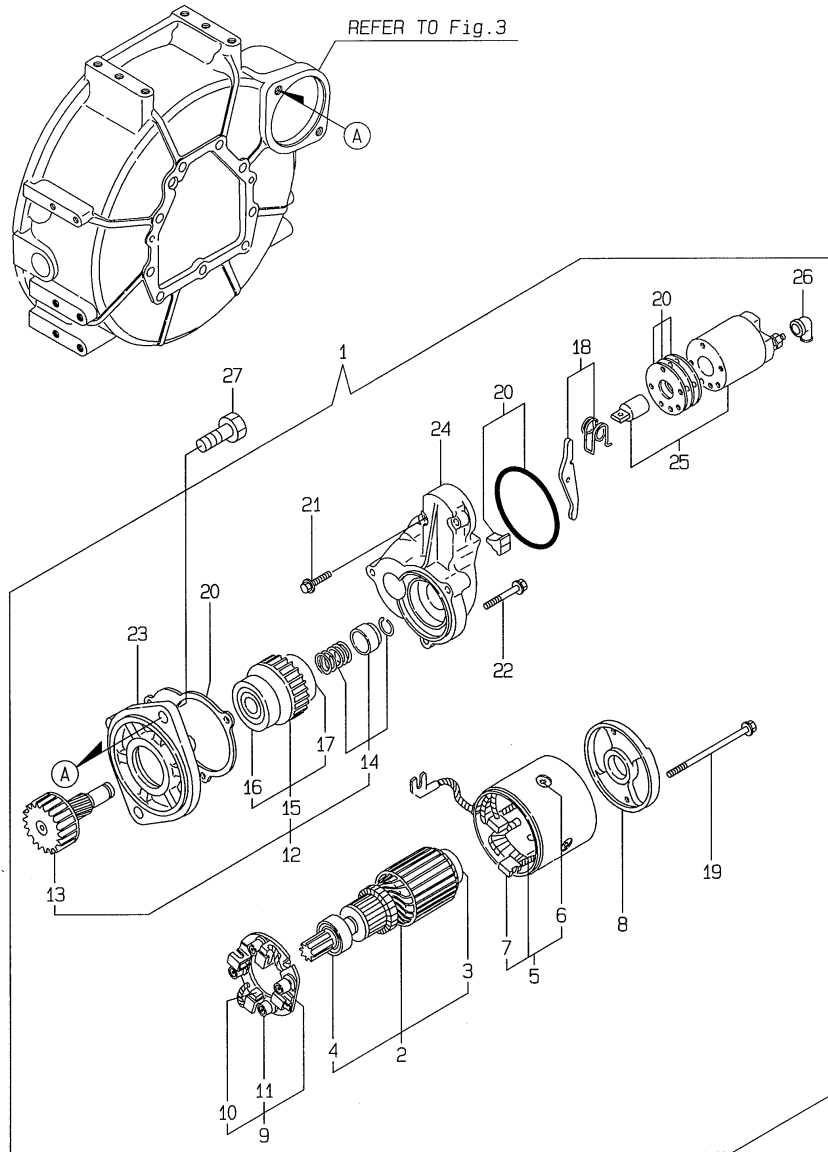
REF.	LEV.	PARTS NO.	DESCRIPTION	Q'TY						I	R
				(A)	(B)	(C)	(D)	(E)	(F)		
I	1	1 119256-77010	MOTOR ASSY, STARTING	1	1	1	1	1	1	W	
		(A=E26589) (B=E31094) (C=E26997) (D=E00190)				(E=E00179)					
I	2	2 X211461005	ARMATURE	1	1	1	1	1	1	W	
		(A=E26589) (B=E31094) (C=E26997) (D=E00190)				(E=E00179)					
I	3	3 X2130350900	BALL BEARING	1	1	1	1	1	1	W	
		(A=E26589) (B=E31094) (C=E26997) (D=E00190)				(E=E00179)					
I	4	3 X211425511	BALL BEARING	1	1	1	1	1	1	W	
		(A=E26589) (B=E31094) (C=E26997) (D=E00190)				(E=E00179)					
I	5	2 X211442003	COIL ASSY, FIELD	1	1	1	1	1	1	W	
		(A=E26589) (B=E31094) (C=E26997) (D=E00190)				(E=E00179)					
I	6	3 X21143215	SCREW, CORE	4	4	4	4	4	4	W	
		(A=E26589) (B=E31094) (C=E26997) (D=E00190)				(E=E00179)					
I	7	3 X211469002	BRUSH (+)	2	2	2	2	2	2	W	
		(A=E26589) (B=E31094) (C=E26997) (D=E00190)				(E=E00179)					
I	8	2 X211483003	COVER, REAR	1	1	1	1	1	1	W	
		(A=E26589) (B=E31094) (C=E26997) (D=E00190)				(E=E00179)					
I	9	2 X211439001	HOLDER ASSY, BRUSH	1	1	1	1	1	1	W	
		(A=E26589) (B=E31094) (C=E26997) (D=E00190)				(E=E00179)					
I	10	3 X211459002	BRUSH (-)	2	2	2	2	2	2	W	
		(A=E26589) (B=E31094) (C=E26997) (D=E00190)				(E=E00179)					
I	11	3 X21148314	SPRING, BRUSH	4	4	4	4	4	4	W	
		(A=E26589) (B=E31094) (C=E26997) (D=E00190)				(E=E00179)					
I	12	2 X211465505	CLUTCH ASSY, PINION	1	1	1	1	1	1	W	
		(A=E26589) (B=E31094) (C=E26997) (D=E00190)				(E=E00179)					
I	13	3 X211465504	SHAFT, PINION	1	1	1	1	1	1	W	
		(A=E26589) (B=E31094) (C=E26997) (D=E00190)				(E=E00179)					
I	14	3 X211429006	STOPPER SET	1	1	1	1	1	1	W	
		(A=E26589) (B=E31094) (C=E26997) (D=E00190)				(E=E00179)					
I	15	3 X211455500	CLUTCH ASSY	1	1	1	1	1	1	W	
		(A=E26589) (B=E31094) (C=E26997) (D=E00190)				(E=E00179)					
I	16	4 X211495502	BALL BEARING	1	1	1	1	1	1	W	
		(A=E26589) (B=E31094) (C=E26997) (D=E00190)				(E=E00179)					
I	17	4 X224041010	BALL BEARING	1	1	1	1	1	1	W	
		(A=E26589) (B=E31094) (C=E26997) (D=E00190)				(E=E00179)					
I	18	2 X211476012	LEVER	1	1	1	1	1	1	W	
		(A=E26589) (B=E31094) (C=E26997) (D=E00190)				(E=E00179)					
I	19	2 X211468005	BOLT, THROUGH	2	2	2	2	2	2	W	
		(A=E26589) (B=E31094) (C=E26997) (D=E00190)				(E=E00179)					
I	20	2 171008-77571	COVER KIT, DUST	1	1	1	1	1	1	W	
		(A=E26589) (B=E31094) (C=E26997) (D=E00190)				(E=E00179)					
I	21	2 X21145866	BOLT	2	2	2	2	2	2	W	
		(A=E26589) (B=E31094) (C=E26997) (D=E00190)				(E=E00179)					
I	22	2 X21142867	BOLT	3	3	3	3	3	3	W	
		(A=E26589) (B=E31094) (C=E26997) (D=E00190)				(E=E00179)					
I	23	2 X2114765040	HOUSING ASSY, GEAR	1	1	1	1	1	1	W	
		(A=E26589) (B=E31094) (C=E26997) (D=E00190)				(E=E00179)					
I	24	2 X2114145010	CENTER HOUSING	1	1	1	1	1	1	W	
		(A=E26589) (B=E31094) (C=E26997) (D=E00190)				(E=E00179)					
I	25	2 171008-77531	MAGNETIC SWITCH ASSY	1	1	1	1	1	1	W	
		(A=E26589) (B=E31094) (C=E26997) (D=E00190)				(E=E00179)					
I	26	2 X21142742	COVER (A), RUBBER	1	1	1	1	1	1	W	

Fig.22. STARTING MOTOR(COLD DISTRICT)

OCR10-G45201 22. STARTING MOTOR(COLD DISTRICT)

(A)=3TNE74-SA  
(B)=3TNE74-G1A  
(C)=3TNE74-G2A

(D)=3TNE74C-SA  
(E)=3TNE74C-G1A  
(F)=



REF.	LEV.	PARTS NO.	DESCRIPTION	Q'TY						I	R	
				(A)	(B)	(C)	(D)	(E)	(F)			
		(A=E26589)	(B=E31094)	(C=E26997)	(D=E00190)	(E=E00179)						
I	27	1	26116-120252	BOLT M12X 25 PLATED	2	2	2	2	2			W
		(A=E26589)	(B=E31094)	(C=E26997)	(D=E00190)	(E=E00179)						

## Part Number Index

All parts are stipulated in the order of part numbers.

(Depending on the area in which the part is used.)

This index will display the location of the part according to each part number.

## PARTS No. INDEX

PARTS No.	Fig.	Ref.No.
101304-59020	15	22
		23 A
101720-55750	15	14
102103-55520	15	9
103854-59191	15	26
104200-55321	15	5
104200-55330	15	6
104200-55341	15	7
104200-55750	15	16
104200-59170	15	25
	20	20
104200-66820	16	8
104200-66830	16	9
104200-66850	16	10
104200-66860	16	11
104211-11370	4	27
104264-59030	15	19
		19 -1
		21 A
104507-07190	19	12
105010-11230	4	38
		42
105025-59550	14	39
105225-23200	8	39
105546-51330	12	25
105582-59150	15	24
110250-55610	15	10
114250-53130	14	9
114250-53400	14	11
114350-22301	8	32
114371-77110	17	20 B
		20 B-1
114371-77140	17	20 C
		20 C-1
114371-77160	17	20 D
		20 D-1
114371-77170	17	20 H
		20 H-1
114371-77180	17	20 J
		20 J-1
114371-79040	17	20 E
		20 E-1
114371-79050	17	20 F
		20 F-1
114371-79060	17	20 G
		20 G-1
114371-79070	17	20 P
		20 P-1
118400-03060	4	56 -1
119131-18320	6	7 -1

PARTS No.	Fig.	Ref.No.
119131-18320	6	27 -1
119209-35030	9	32 -2
	20	27 -2
119232-61510	13	29
119232-61540	13	45
119255-77010	17	1 -2
	21	1
119256-77010	22	1
119259-44570	11	5
119260-07900	4	2
119260-59020	15	21 -1
119260-59520	14	37
119260-59530	14	38
119260-66720	13	81
119265-44400	9	41
119280-01600	3	2
119280-49020	11	32
119285-66080	13	56
119288-08100	11	1
119288-55900	13	119
119288-55901	13	119 -1
119288-61200	13	15
119288-61510	13	30
119288-91130	19	7
119288-91140	19	5
119305-35150	9	18
119358-13640	6	16
119489-66500	13	73 A
119600-01050	1	5
119600-01600	3	3
119600-01722	3	14
119600-01770	3	20
119600-11450	4	30
	20	9
119600-11460	4	29
	20	10
119600-21580	8	16
119600-34800	9	14
119600-34820	9	15
119600-35081	9	30
119600-35091	9	31
119600-52021	15	2
119600-61100	13	4
119600-61200	13	5
119600-61541	13	46
119600-61650	13	50
119600-61900	13	54
119600-66020	13	64
119600-66530	13	73
119600-66720	13	80

PARTS No.	Fig.	Ref.No.
119600-66840	13	108
119610-01490	2	14
119610-01590	2	1
119610-66700	13	80 A
119620-01200	1	23
119620-01620	3	9
119620-01750	3	7
119620-01800	2	4
119620-02020	1	6
119620-02410	1	21
119620-02450	7	4
119620-03020	4	51
119620-03031	4	52
	20	6
119620-11110	4	21
119620-11120	4	22
119620-11180	4	23
119620-11200	4	31
119620-11240	4	32
119620-11260	4	35
119620-11280	4	36
119620-11310	4	55
	20	12
119620-11330	4	50
119620-11350	4	47
119620-11390	4	56
119620-11801	4	12
119620-13110	6	2
	20	14
119620-13501	6	11
119620-13510	6	12
119620-13520	6	13
119620-13560	6	14
119620-14100	7	7
119620-14200	7	1
119620-14401	7	2
119620-21500	8	55
119620-21591	8	20
119620-21941	8	10
119620-23910	8	37
119620-25102	7	11
119620-25912	7	13
119620-42020	10	15
	20	17
119620-42320	10	12
119620-51101	12	4
119620-51170	12	7
119620-51180	12	8
119620-51190	12	9
119620-51250	12	10

PARTS No.	Fig.	Ref.No.
119620-51300	12	22
119620-51340	12	26
119620-51350	12	27
119620-51370	12	28
119620-51450	12	29
119620-51461	12	30
119620-51510	12	32
119620-51650	12	34
119620-51660	12	35
119620-51670	12	36
119620-51680	12	37
119620-51700	12	38
119620-53000	14	3
119620-53080	14	6
119620-53100	14	7
119620-53120	14	8
119620-53140	14	10
119620-59540	14	35
119620-59700	14	40
119620-59811	14	23
119620-59821	14	27
119620-59831	14	31
119620-77820	4	64
119621-01611	3	4
119621-21680	8	9
119621-44500	11	4
119621-44560	11	6
119621-66051	13	65
119621-66610	13	122
119621-66710	13	124
119621-77331	18	25
119621-77340	18	23
119621-99100	20	33
119621-99400	20	34
119623-01250	1	12 -1
119623-01330	1	24
	20	3
119623-01950	2	23
119623-11100	4	20
119623-21700	8	1
119623-22080	8	24
119623-22500	8	26
119623-22900	8	42
119623-22950	8	44
119623-34820	9	15 -1
119623-35080	9	30 -1
119623-61200	13	15 A
119624-02410	1	21 -1
119624-32040	2	6 -1
	20	30 A

# PARTS No. INDEX

PARTS No.	Fig.	Ref.No.
119629-14580	7	3
119629-66510	13	72
119631-13101	6	1
119631-77010	17	1
119631-77011	17	1 -1
119631-77651	17	20 K
119631-77780	17	20 K-1
		20 N
		20 N-1
119632-61200	13	14
119640-01640	3	17
119642-33030	9	39
119642-33100	9	40
119642-42000	10	2
119642-49030	9	43
119642-49050	9	44 -1
119642-49060	9	44 A
119642-49090	9	44 B
119644-21200	8	5
119645-49020	11	31
119650-42291	10	17
119653-12500	5	5
119653-12550	5	10
119653-12600	5	11
119653-66500	13	67
119655-12560	5	7
119657-11350	4	50 -1
119660-01510	2	17
119660-01551	2	20
119660-01562	2	21
		20 4
		22
119660-01570	2	22
119660-01640	3	10
119660-01821	7	17
119660-01911	2	5
119660-12101	5	1
119660-12111	5	2
		20 13
		8 8
119660-21651	8	8
119660-25022	7	9
119660-25052	7	10
119660-32001	9	1
119660-32020	9	11
		20 16
		9 16
119660-35102	9	16
119660-35113	9	17
		20 30
		9 19
119660-35300	9	19
119660-42004	10	1
119660-42005	10	1 -1

PARTS No.	Fig.	Ref.No.
119660-42006	10	1 -2
119660-42350	10	18
119660-51500	12	31
119660-51530	12	33
119660-61052	13	19
119660-61060	13	2
119660-61071	13	3
119660-61121	13	11
119660-61140	13	12
119660-61150	13	13
119660-61300	13	9
119660-61341	13	10
119660-61460	13	20
119660-61491	13	28
119660-61651	13	49
119660-61901	13	55
119685-61940	13	63 A
119685-61950	13	66 A
119688-21590	8	12
119688-44940	11	8
119688-44941	11	8 -1
119688-44950	11	9
119688-44961	11	10
119688-44971	11	11
119688-44972	11	11 -1
119688-44981	11	12
119688-49010	11	30
119688-66120	16	1
119789-11200	4	31 A
119789-12600	5	11 -1
119789-66010	13	64 A
119807-11770	4	57 -1
119808-12540	5	9
119823-13600	6	9 -1
119836-77200	18	1
119836-77700	18	2
119836-77710	18	4
119836-77721	18	5
119836-77730	18	6
119836-77741	18	7
119836-77750	18	8
119836-77760	18	9
119836-77770	18	10
119836-77780	18	11
119836-77790	18	15
119836-77800	18	16
119836-77810	18	19
119836-77820	18	20
119836-77830	18	21
119836-77840	18	17

PARTS No.	Fig.	Ref.No.
119836-77850	18	3
119836-77860	18	18
119836-77871	18	12
119836-77880	18	13
119836-77890	18	14
119840-13150	6	3
119865-12600	5	12
119865-21600	8	15
		19
		2
119888-08110	11	2
119888-21450	8	52
119888-66110	16	4
119888-66130	16	5
119888-66160	16	2 A
119888-91021	19	2
119888-91022	19	2 -1
119888-91031	19	18
119888-91101	19	10
119888-91110	19	20
119888-91120	19	6
119888-91201	19	11
119888-91301	19	10 A
119888-91311	19	11 A
119888-91610	19	24
119888-91620	19	25
119988-61460	13	107 B
121000-13201	6	4
		10
		20 15
121023-01550	2	32
121023-49150	11	40
121111-21501	8	11
121120-01620	3	6
121236-59080	15	21
		21 C
		5 C
121250-44590	11	5 C
121250-44901	10	25
121250-55620	15	11
121254-55510	15	8
121256-44600	11	29
121400-44650	11	7
121400-91520	19	22
121400-91530	19	23
121450-01560	2	18
121450-42450	10	27
121465-59950	13	118
121520-01851	15	1
121520-34810	9	13
121550-49111	11	43
121575-66830	13	107

PARTS No.	Fig.	Ref.No.
121750-49150	11	39
121750-59890	19	35
		37
		38
		39
121850-11860	4	15
121851-11970	9	41 -1
121855-13821	6	17
121855-13830	6	18
123500-13840	6	19
124060-21600	8	23
124060-59380	15	28
124066-59100	14	36
124085-02220	3	12
124097-77710	17	20 L
		20 L-1
		2 12
124160-01751	4	57
124160-11340	4	25
		20 8
		4 61
124160-11360	4	61
124160-39450	9	34
124160-59011	15	23 -1
124160-59080	15	23
		23 C
		17 19
124190-77110	17	19
124190-77760	17	20
124195-77770	17	20 M
		20 M-1
124250-49351	10	29
124298-77020	17	20 A
		20 A-1
		11 23
124450-44510	11	23
124450-44530	11	25
124450-44550	11	28
124450-44560	11	26
124465-44950	10	26
		28
		20 19
124550-55700	15	13
124550-66370	13	66
124550-77030	19	1
124559-77971	19	16
124574-44761	10	31
124664-13580	6	15
124700-44740	10	19
124701-91140	19	4
124732-77720	19	13
124766-59050	11	39 A
		40 A

## PARTS No. INDEX

PARTS No.	Fig.	Ref.No.
124766-59050	11	41
	15	20
		20 -1
		21 B
		23 B
124770-91220	19	21
124950-11340	4	26
	20	7
126650-66020	16	3
127694-91050	11	45
127695-39710	9	35 -1
128300-77920	19	15
129100-01580	3	1
	8	2
129100-61930	13	63
129120-35301	9	19 -1
129122-44480	9	42
129132-44530	11	5 B
129150-35350	9	27
129150-49080	11	35
129150-49100	11	34
129150-49360	10	30
129150-59120	14	18
129150-59131	14	21
129150-91400	2	35
129155-51280	13	16
129155-51580	14	2
	20	24
129155-61480	13	23
129155-61830	14	2 -1
	20	24 -1
129210-49110	11	39 B
129210-49250	11	38 A
129350-49530	10	21
129350-49541	10	22
	20	18
129350-49800	10	23
129400-92410	20	31
129403-49050	9	44
129470-39610	9	36
129795-77800	4	63
144626-91560	9	38
170064-67210	16	21
171002-66830	13	107 A
171008-77531	22	25
171008-77571	22	20
171010-77850	19	14
171048-67010	16	6
171048-67130	16	15
171048-67140	16	16

PARTS No.	Fig.	Ref.No.
171059-55600	15	4
171080-91100	19	19
171085-67100	16	12
171085-67110	16	13
171085-67120	16	14
171090-91010	19	17
171102-66080	16	7
171301-01640	3	21
171375-39600	9	35
174307-51700	13	31
194180-51640	19	36
194990-22050	2	30
	6	5
		26
		28
	13	1
719620-02800	1	15
719620-02870	1	25
719620-02930	1	18
719620-11650	4	37
719620-11660	4	41
719620-23100	8	34
719620-23600	8	56
719620-23610	8	50
719620-53700	14	1
719621-51100	12	1
719623-01560	1	1
719623-11700	4	6
719623-11710	4	5
719623-92610	20	1
719623-92620	20	2
719631-01540	3	16
719660-14590	7	18
719789-11650	4	37 A
719789-11660	4	41 A
933110-00100	19	30
933110-00301	19	32
977770-01212	2	39
	3	27
	20	32
X0280210331	21	23
X0280335360	21	34
X0280626010	21	12
X0280996180	21	3
X0281007680	21	2
X0282005871	21	6
X0283006960	21	7
X0284105010	21	13
X0284525010	21	27
X0285005770	21	10

PARTS No.	Fig.	Ref.No.
X0285105190	21	4
X0285205030	21	5
X0286105010	21	15
X0286305010	21	17
X0286355010	21	18
X0287405140	21	19
X0534007800	21	20
X1289510130	21	35
X2114145010	22	24
X211425511	22	4
X21142742	22	26
X2114275070	17	2
X2114283500	17	3
X21142867	22	22
X211429006	22	14
X21143215	22	6
X211439001	22	9
X211442003	22	5
X2114430010	17	4
X2114531200	17	6
X2114535200	17	5
X2114555500	22	15
X21145866	22	21
X2114586700	17	7
X211459002	22	10
X211461005	22	2
X2114631090	17	8
X211465504	22	13
X211465505	22	12
X2114660130	17	9
X211468005	22	19
X2114680050	17	10
X211469002	22	7
X2114715500	17	11
X211476012	22	18
X2114765040	22	23
X2114780060	17	12
X2114811000	17	13
X2114821500	17	14
X211483003	22	8
X2114831300	17	17
X21148314	22	11
X2114931400	17	18
X211495502	22	16
X2114966130	17	15
X2114990010	17	16
X2130350900	22	3
X224041010	22	17
X2284005750	21	8
X2411365340	11	5 A

PARTS No.	Fig.	Ref.No.
X9055715000	21	21
X9490065670	21	33
X9490138090	21	25
X9490138100	21	26
X9490138110	21	24
X9490423520	21	30
X9490560750	21	29
X9490562360	21	28
X9490721360	21	22
X9491034320	21	16
X9491034330	21	14
X9491040990	21	11
X9491050100	21	9



**YANMAR CO.,LTD.**