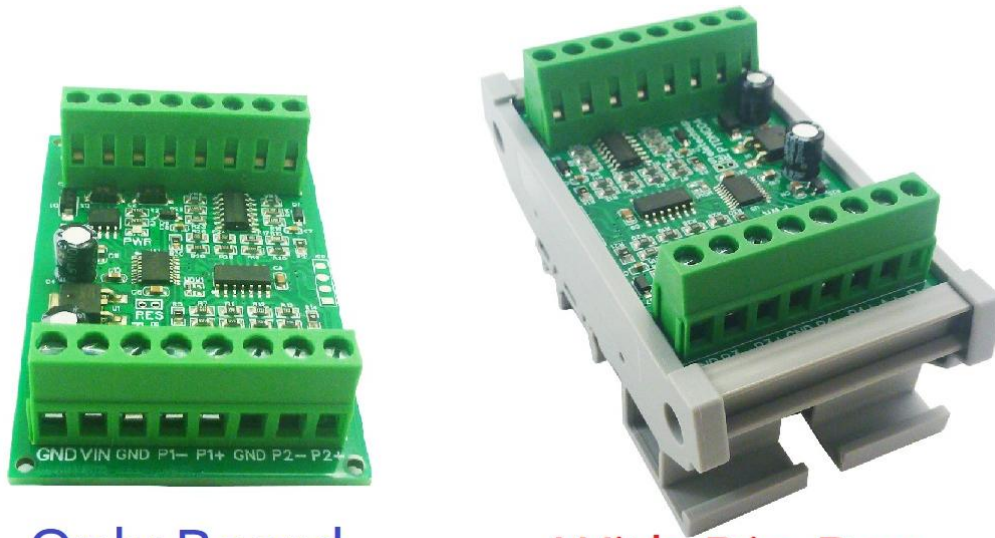


## PTDNC04 4CH PT100 PT1000 RS485 Sensor Manual



Only Board

With Din Box

**Demo :** <https://youtu.be/VsYYrE8g4fo>

### **PTDNC04 PT100/PT1000 RS485 Acquisition module Description:**

Power supply voltage: DC 6~25V

Working current: 20mA

MODBUS RTU protocol, 03 read command, 06 or 16 write command.

Serial port baud rate: 1200-115200,9600 (default), N, 8, 1

By modifying the 485 address, up to 247 modules can be cascaded (please use RS485 repeater for more than 16)

Can read temperature and PT100/PT1000 resistance value

Applicable sensor: PT100/PT1000 3-wire or 2-wire sensor

Temperature measurement range: A version -40℃ to +220℃; B version -40℃ to +500℃. It is recommended to choose a version with a smaller range within the measurement range.

Temperature measurement accuracy: 1%, if the temperature deviation is too large, please recalibrate

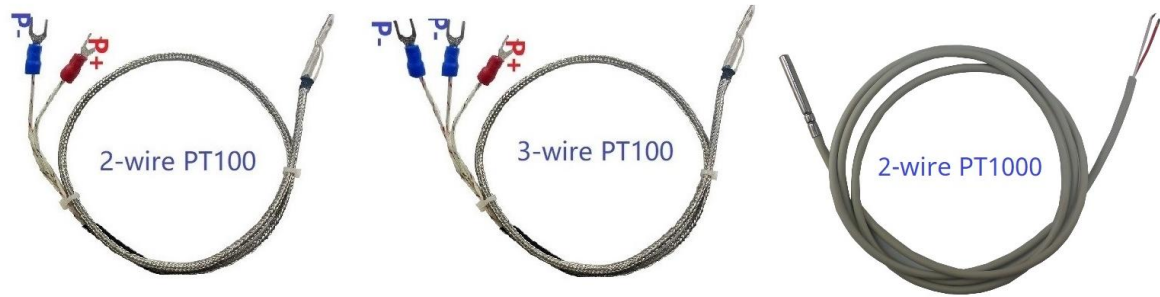
Dimensions: 72 X 46 X18MM (board only), 79 X 49 X40MM (with shell)

Weight: 32g (board only), 78g (with shell)

MODBUS RTU protocol please refer to : "PTDNC04 Modbus Rtu Command "

#### **Product testing experience:**

Although it uses the LM324 op amp as the front-end circuit like other eletechsup PT100 collectors, it uses a more ingenious and reasonable signal processing design, coupled with a more accurate ADC chip, which allows it to achieve higher-precision measurements while keeping the cost unchanged. Its measurement accuracy is more than 20% higher than that of PTA8C04 PTA8D08 PTA8E16.



### **PT100 sensor specifications(Type A):**

Type: PT100

Probe Diameter: 6.5mm

Probe Length: 30mm

Probe Material : Stainless steel

Cable Length: 0.5M

PTFE sheath 3-Wire type

Temperature -200~550° C degree

Nominal accuracy : 0.1%

### **PT100 sensor specifications(Type B):**

Type: PT100

Probe Diameter: 4mm

Probe Length: 30mm

Probe Material : Stainless steel

Cable Length: 0.5M

PTFE sheath 3-Wire type

Temperature -50~200° C degree

Nominal accuracy : 0.3%

### **PT1000 sensor specifications:**

Wire: PVC

Wire temperature resistance: -20~+108°C

Probe temperature range: -60~260°C

Measurement accuracy: 0.1%

Probe diameter: 5MM

Probe length: 45MM

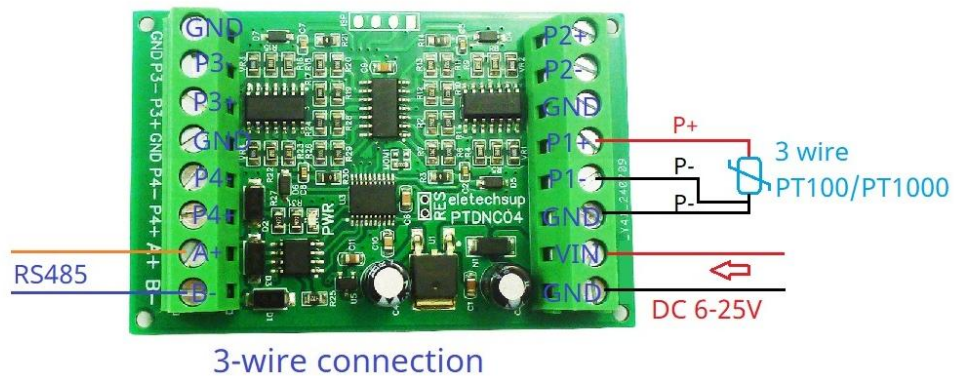
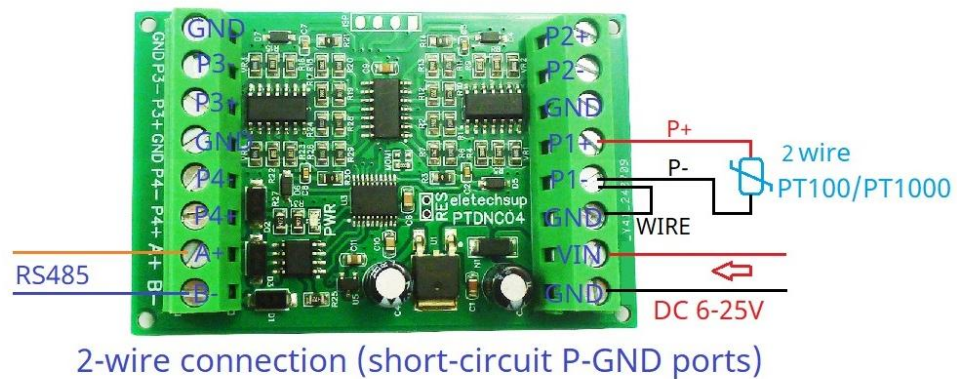
Probe material: stainless steel shell

Total cable length: 1.5 meters

Weight: 32 grams

## Wiring diagram:

### Wiring Diagram



The PT100/PT1000 sensor probe is a variable resistor, regardless of positive or negative poles.

3-wire probe wiring method: red wire connected to P+, the other two wires of the same color connected to P- and GND (without distinguishing between ports).

2-wire probe wiring method: red wire connected to P+, blue wire connected to P-, P- and GND are connected with wires.

RS485 bus wiring diagram:

